



 NATIONAL AQUARIUM.

20 | IMPACT  
24 | REPORT

# Welcome

## NATIONAL AQUARIUM 2024 IMPACT REPORT

The National Aquarium’s mission is to connect people with nature to inspire compassion and care for our ocean planet. As a nonprofit, we could not do this work without you—our 1.2 million annual guests, our household and corporate members, employees and volunteers, Board leadership, partners, donors, funders and our Baltimore community—and we are so grateful.

In 2024, we accomplished so much together to benefit people, animals and the ocean. Our mission was the guiding force behind all our work in 2024—on our campus, in Baltimore City, across Maryland, and beyond.

## CONTENTS

### ON OUR CAMPUS

Spotlight on National Aquarium’s <i>Harbor Wetland</i> presented by CFG Bank .....	2
More Impact on Our Campus .....	4

### IN BALTIMORE CITY

Spotlight on Community Access and Engagement .....	6
More Impact in Baltimore City .....	8

### ACROSS MARYLAND

Spotlight on Economic Impact .....	10
More Impact Across Maryland .....	12

### BEYOND

Spotlight on Animal Rescue .....	14
More Impact Nationally and Internationally .....	16

### ALL THANKS TO YOU

Our Donors .....	19
Our Volunteers .....	26





# On Our Campus

## SPOTLIGHT ON NATIONAL AQUARIUM'S HARBOR WETLAND PRESENTED BY CFG BANK

The Aquarium's newest exhibit, [\*Harbor Wetland\*](#), is free and open to all. It sits in the Inner Harbor between Piers 3 and 4 of our campus in downtown Baltimore. After 14 years of research and planning and nine months of construction, *Harbor Wetland* opened on August 8, the 43rd anniversary of the Aquarium's 1981 grand opening. Guests can step onto *Harbor Wetland's* floating docks to experience a re-created salt marsh. In addition to teaching visitors about wetland ecosystems, *Harbor Wetland* reintroduces habitat into the Inner Harbor, promotes healthy water and supports native species.

---

*Harbor Wetland opened on August 8 in Baltimore's Inner Harbor.*





**1** In total, the *Harbor Wetland* project cost more than \$14 million. Construction costs totaled over \$9 million, and more than half was paid to minority-owned, women-owned and small business enterprises. *Harbor Wetland* is presented by Baltimore-based CFG Bank, with other leading private investment from the Whiting-Turner Contracting Company, the Bunting Family Philanthropies and Constellation—as well as the generosity of the Aquarium’s philanthropic community and local, state and federal government support.

**2** From *Harbor Wetland*’s opening in August through the end of 2024, a total of 54,458 guests visited the exhibit. From September to December, hundreds of students experienced *Harbor Wetland* through National Aquarium education programs, including more than 300 through [What Lives in the Harbor](#) alone.

**3** Throughout 2024 (including during *Harbor Wetland*’s construction), community scientists documented 322 observations of 116 different species of animals, insects and plants on, in and around the exhibit. Notable sightings included river otters, diamondback terrapins, blue crabs, pumpkinseed sunfish and black-crowned night herons. *Harbor Wetland* is planted with 32,000 native grasses and shrubs. From August through December, 515 contributors uploaded photos tracking the vegetation’s growth on [Chronolog](#).

**4** The work of local artists adds to *Harbor Wetland*, too. [Street artist and Baltimore native Nether created a large-scale mural](#) that serves as a backdrop to the exhibit. Musicians Jessica Keyes and Patrick McMinn, the featured artists of [Voyages: Chapter 2](#), returned to the Aquarium to create the sound installation that guests hear as they explore the floating habitat.

## MORE IMPACT ON OUR CAMPUS



Welcomed our 60 millionth guest to experience thousands of animals in our award-winning habitats, creating memorable experiences that spark connection, curiosity and empathy for the natural world and each other. Each year more than a million people visit the Aquarium as part of their time in Baltimore. We look forward to continuing to welcome guests to the Aquarium—and the reimagined Inner Harbor—in the years ahead.

Provided exceptional animal care and welfare for the more than 13,000 animals we are responsible for. This requires significant expertise given the diversity of species represented throughout the Aquarium—including 115 kinds of invertebrates, 350 fish and shark species, over 80 types of reptiles and amphibians, nearly 40 kinds of birds, and three marine and terrestrial mammal species. As an AZA-accredited organization, we meet and exceed the highest standards for animal wellbeing.



Had one-on-one conversations with 725,200 guests and reached 221,700 more through group presentations like Animal Encounters and keeper talks. More than 16,330 guests also participated in Aquarium tours. Our team connects directly with Aquarium guests to discuss climate change, plastic pollution, and losses of biodiversity and habitat. We also talk about individual actions and community-level solutions that can help address these complex issues.



## MORE IMPACT ON OUR CAMPUS

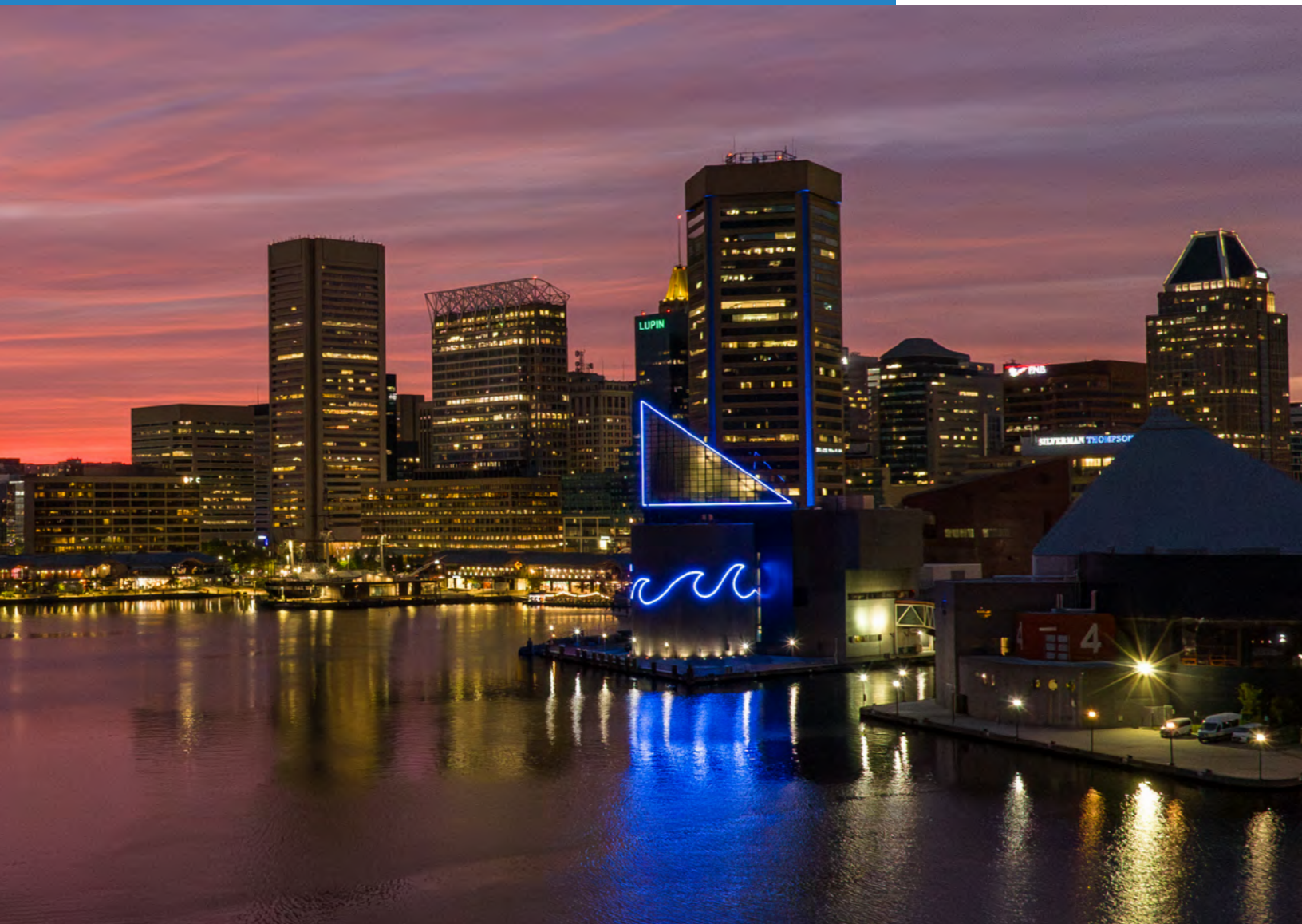
Offered [field trips](#) at no cost to 49,198 Maryland students and educators, thanks to a partnership supported in part by the State of Maryland. We also engaged more than 30,300 pre-K through 12th-grade students in other Aquarium education programs, including [AquaPartners](#) and [What Lives in the Harbor](#), and helped another 100 high schoolers prepare for college and careers through [YouthWorks](#), [Youth Exhibit Guides](#) and the Henry Hall Fellowship (renamed [Leaders for Environmental Action Fellowship](#)).



Conducted an energy audit and performed background research to inform strategies for attaining our goal of lowering our emissions to net-zero. We continued to advance energy efficiency measures with upgrades to smaller equipment and lighting. We also met with representatives from other institutions on a similar net-zero path, collected data to inform future planning and researched funding options.

Implemented a new, standardized waste flow system in back-of-house spaces in the Aquarium and the Animal Care and Rescue Center to improve waste diversion. As part of this, we standardized collection bins for trash, recycling and compost across the organization, created an education and training program for staff, and posted detailed waste sorting signs near bins. This has resulted in a significant improvement in proper waste disposal across the Aquarium.





# In Baltimore City

## SPOTLIGHT ON COMMUNITY ACCESS AND ENGAGEMENT

The National Aquarium attracts visitors from around the globe, but we belong to Baltimore. We work to ensure that a visit to the Aquarium is possible for all our neighbors. In 2024, we welcomed a record 109,558 guests for free or reduced admission through our [community access programs](#). We also continued to engage city residents in important conservation work right in their own neighborhoods—from Jonestown to Locust Point to Curtis Bay.

---

*The National Aquarium strives to be inclusive, accessible and welcoming to all.*





**1** Local residents visited the Aquarium for free or reduced admission through our [signature access programs](#) and citywide promotions we support, including [Free Fall Friday Night in collaboration with the Baltimore Office of Promotion & The Arts](#) and [Downtown Discovery Days in cooperation with Downtown Partnership](#). We also had our best-performing year of [Community Connections](#), which provides complimentary Aquarium tickets to qualifying nonprofits through generous support from our [corporate partners](#).

**2** [Read to Reef, in partnership with the Enoch Pratt Free Library](#), is our most recognizable and important affordable access program. During the 2024 spring and fall seasons of Read to Reef, a record 13,324 young Baltimore readers and their family members visited the Aquarium for free after reading books about aquatic life and ocean conservation. We also integrated Read to Reef into Pratt Library's Read to Me program, providing free shuttle transportation for those participants, and hosted seasonal author talks.

**3** [Voyages](#) is an after-hours, adults-only event series that inspires connection to nature and celebrates all things Baltimore. A total of 1,309 people attended 2024's two sold-out events, setting records for the fastest sell-out and highest attendance. We hosted two artists-in-residence to create original artwork for the events and collaborated with six restaurants, two craft beverage brands, two illustrators for custom poster art and 14 community advisors—all from Baltimore.

**4** For the Voyages: Chapter 5 event in July, [artist Schaun Champion](#) created an original installation, "Braided Streams and Dreams," with inspiration from featured scientist Angelo Villagomez. Schaun's interdisciplinary exhibition featured photography, floral installations and live performances from WombWork Productions. The evening ended with live jazz by Brandon Woody and UPENDO.

**5** At Voyages: Chapter 6 in November, Baltimore-based [recording artist and performer Dan Deacon](#) created "Feedback Loop" after conducting research with Patuxent Riverkeeper founder Fred Tutman. Forty local musicians performed Dan's composition live throughout the Aquarium's galleries, and an after-party featured his interactive DJ show.



## MORE IMPACT IN BALTIMORE CITY



Held several cleanups at [Masonville Cove](#) and [Fort McHenry](#) to remove plastic from local waterways and wetlands. During these cleanups, volunteers removed 69,589 pieces of debris from the water and shore—96% of which was plastic. The most common plastic items found were foam, bottle caps, beverage bottles, straws, food wrappers and cigar tips.

Served as the Baltimore metropolitan area's regional coordinator for [City Nature Challenge](#), a global initiative to catalog and identify plant and animal species. More than 760 participants recorded 10,150 observations of 1,645 different species of plants and animals in and around Baltimore during the 2024 challenge. These observations included more than 100 made during the BioBlitz at an [Urban Wildlife Conservation event at Masonville Cove](#).



Provided no-cost summer camp for 241 Baltimore City students. All [Henry Hall Summer Scholars camps](#) are immersive sleepaway experiences. More than 120 of these students traveled out of state to study and learn about the unique cultural stories and aquatic ecosystems found in Alabama, Colorado, Georgia, Maine, Massachusetts and Pennsylvania.



## MORE IMPACT IN BALTIMORE CITY

Partnered with the Helping Up Mission and Jonestown residents for the sixth year in a row in the Exeter Street Community Garden near the [Animal Care and Rescue Center](#). We hosted gardening days for neighbors to plant, harvest and maintain the garden, and helped distribute food grown in the garden to people in the community. To attract insects and pollinators to the garden, volunteers installed a bug hotel built by Aquarium staff and filled by Flower Mart festivalgoers.

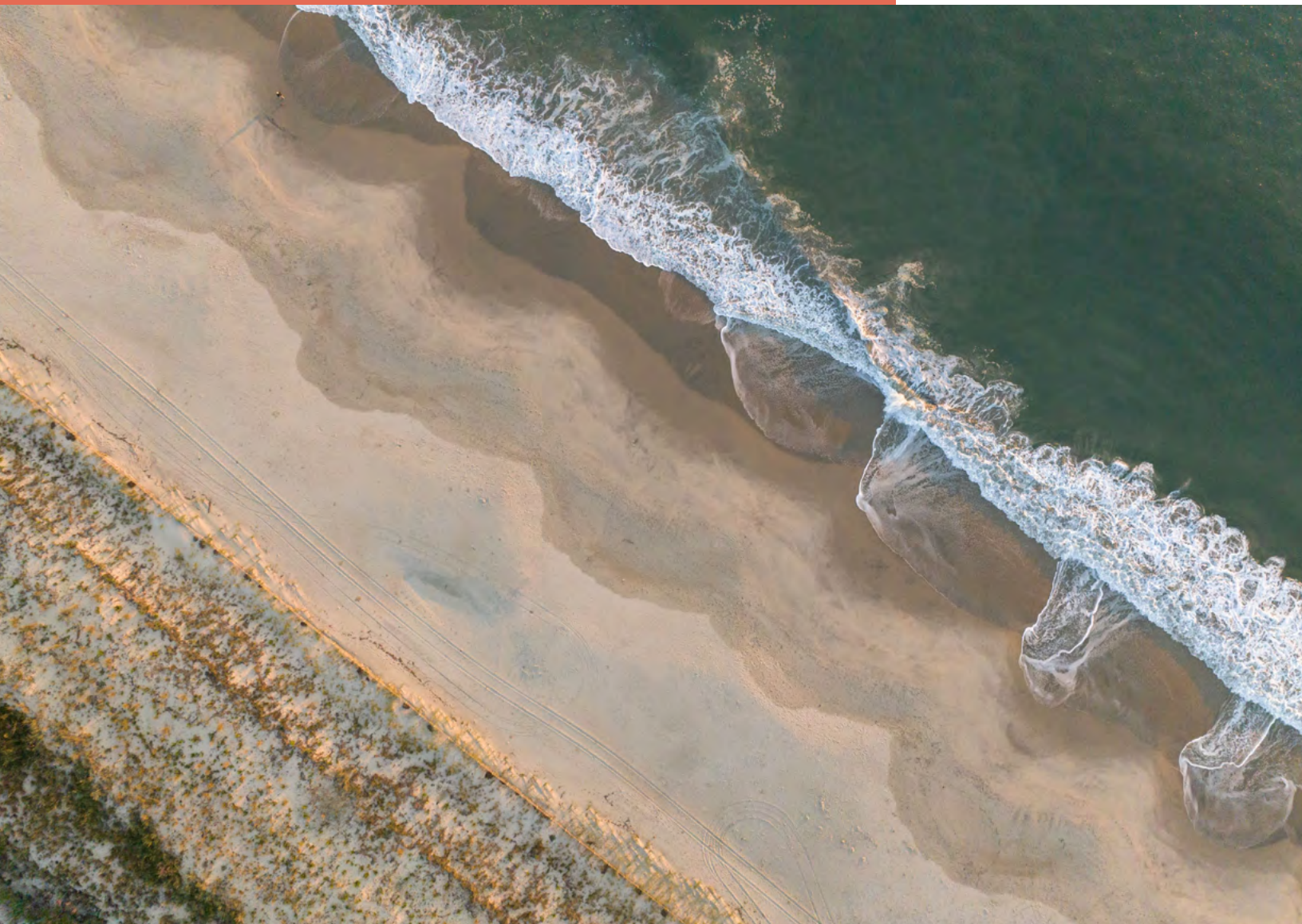


Took part in the [Baltimore Pride](#) parade to support and celebrate staff with LGBTQIA+ identities and as another way to engage in local community events. Over 40 Aquarium staff members signed up to be a part of this citywide celebration of love, diversity and progress, and many more chose to come together while at work prior to the parade for education and community gathering.

Donated tickets to nonprofits, including those supporting people impacted by the Key Bridge collapse through the [GBC Maryland Tough, Baltimore Strong Alliance](#), Maryland Voluntary Organizations Active in Disaster, and our [Community Connections](#) program supported by [corporate members](#). These tickets gave those directly affected by the collapse an opportunity for respite through a visit to the Aquarium. Also through Community Connections, we welcomed over 250 Baltimore City students through Council President Zeke Cohen's Field Trip Fridays summer program.







# Across Maryland

## SPOTLIGHT ON ECONOMIC IMPACT

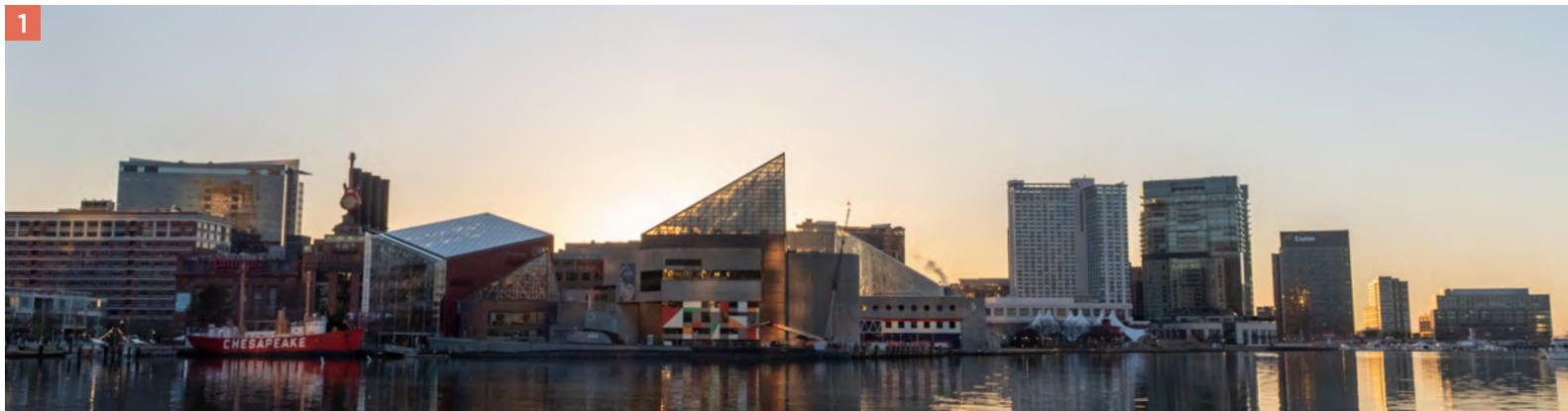
The Aquarium—consistently ranked as one of the top three aquariums in the United States—attracts visitors to Maryland and creates jobs. It is the largest paid cultural attraction in the state. Since the day the Aquarium opened in 1981, we have served as an important economic anchor in Baltimore City and throughout Maryland. The Aquarium is a nonprofit that relies on community and public sector support, and in turn delivers robust economic benefits for the region.

---

*The Aquarium's location is an important reminder of our responsibility to the Inner Harbor, Chesapeake Bay and the ocean.*



1



2



3



**1** Each year, the Aquarium drives more than \$430 million in statewide economic impact, generates \$36 million in state and local tax revenue, and supports 3,400 jobs statewide.

**2** More than 70% of Aquarium visitors are from outside the Baltimore region, and more than 20% stay in the area overnight. Approximately 90% of Aquarium visitors report that the Aquarium is their primary reason for visiting Baltimore. Two-thirds of Aquarium visitors report spending money at nearby businesses before or after their visit.

**3** The annual funding needed to maintain and operate the National Aquarium—a 24/7, 365-day-a-year facility—is substantial. Ticket sales and memberships alone cannot sustain it. Unlike many peer institutions across the country, we receive no dedicated annual general operating support from the city, state or federal governments. We depend on the generosity of our philanthropic community.



## MORE IMPACT ACROSS MARYLAND



Planted 5,500 Atlantic white cedar trees at [Nassawango Creek Preserve](#) on the Eastern Shore in partnership with The Nature Conservancy and 237 volunteers—students from Snow Hill Middle School and Berlin Intermediate, members of the local community, the Aquarium Conservation team, and Maryland Conservation Corps members. For more than a decade, the Aquarium has been part of efforts to restore this ancient forest ecosystem.

Introduced 11,622 students in more than 40 schools to Maryland’s state reptile through the long-standing [Terrapins in the Classroom](#) program that places turtle hatchlings in Maryland schools so students can care for, observe and learn about these animals throughout the school year. The hands-on care students provide allows them to develop an appreciation for this vulnerable species and build conservation- and science-related skills. The students’ data also aids ongoing research at Ohio University.





## MORE IMPACT ACROSS MARYLAND



Advocated for 79 bills and policies across all levels of government, including successful state legislation like the Whole Watershed Act to advance restoration of the Chesapeake Bay and the Biodiversity and Agriculture Protection Act to modernize how Maryland combats invasive plant species.

Organized a Latino Conservation Day at Patapsco State Park in collaboration with Templo de Alabanza y Restauración to celebrate the community's conservation work. More than 200 people took part in the event, which was also supported by Chesapeake Conservancy, Corazón Latino, Defensores de la Cuenca, Latino Outdoors and Maryland Department of Natural Resources, as well as Maryland Environmental Service and Living Classrooms, both members of the Masonville Cove partnership in South Baltimore.







# Beyond

## SPOTLIGHT ON ANIMAL RESCUE

Since 1991, the [National Oceanic and Atmospheric Administration \(NOAA\)](#) and the [U.S. Fish and Wildlife Service](#) have authorized the Aquarium to respond to sick and injured marine mammals and sea turtles. In 2024, our Animal Rescue and Animal Health teams admitted and cared for a total of 69 rescued animals—64 sea turtles and five seals. We returned all five seals to the ocean as well as 23 sea turtles (16 Kemp’s ridleys, three loggerheads and four greens), while 41 sea turtle patients (39 Kemp’s ridleys and two loggerheads) continued their rehab stays into 2025.

---

*All sea turtles are federally protected by the Endangered Species Act.*





**1** We continued to play a major leadership role in advocating for the [Sea Turtle Rescue Assistance and Rehabilitation Act](#). This bipartisan legislation—which is supported by 92 organizations from 35 states/territories—overwhelmingly passed the U.S. House of Representatives in April and advanced out of the U.S. Senate Committee on Commerce, Science and Transportation in August.

**2** Our [Stranding Response Center](#)—opened in partnership with the Town of Ocean City—marked its first full year of operations. The center fills a critical need within the Greater Atlantic region by providing immediate care for sick and injured marine animals being transported to the Aquarium or elsewhere for care or returned to the ocean. Our team in Ocean City responded to 28 seals, eight sea turtles and two cetaceans in the field and admitted seven seals and three sea turtles for initial assessment and triage care.

**3** In February, the Aquarium’s Animal Rescue and Animal Health teams admitted our youngest patient to date—a [one-week-old pup nicknamed Selkie](#). Baby seals that have been separated from their mother too early require much more intense care in rehab. After three months of care, we released Selkie in May at Assateague State Park, outfitted with a flipper tag and a satellite tag that successfully collected 12 days of tracking data.

**4** As part of our stranding response role for the state of Maryland, the National Aquarium Animal Rescue team provides 24-hour coverage of our Stranded Animal Hotline. This hotline gives the public direct access to Aquarium staff around the clock and ensures accurate and efficient response to incoming calls. We received 115 requests for response or service in 2024—a total of 60 for seals, 10 for sea turtles, 10 for cetaceans and 35 for other types of wildlife.



## MORE IMPACT NATIONALLY AND INTERNATIONALLY



Selected as a top honors recipient of the [Association of Zoos and Aquariums \(AZA\) Green Award](#). This international honor recognizes the Aquarium's conservation and sustainability efforts in energy and emissions, water management, material life cycle impacts, construction and building management, habitat and natural area management, engagement and awareness, and innovation.

Completed the first year of a renewed agreement with the Department of the Navy to [restore sand dunes in Naval Air Station Oceana Dam Neck Annex in Virginia Beach](#). We used a real-time global navigation satellite system to accurately map patches of Asiatic sand sedge, an invasive species, along 6 miles of coastline. The imaging captured the precise location and extent of the plants' growth so they could be removed.



Participated in successful advocacy for the development of the first-ever National Ocean Biodiversity Strategy and a White House-level report on plastic pollution—highlighting the impact of plastic on the environment and human health—and for the expansion of the National Marine Sanctuary System. NOAA designated Lake Ontario and Wisconsin Shipwreck Coast National Marine Sanctuary in June and the Chumash Heritage National Marine Sanctuary in November.



## MORE IMPACT NATIONALLY AND INTERNATIONALLY

Sustainably propagated or bred 27 species, lessening impacts on these species' habitats and populations. This included neon gobies as part of the Association of Zoos and Aquariums' innovative [larval fish rearing program](#). Caring for fish through their larval phase requires specialized knowledge and expertise. This collective effort across AZA-accredited aquariums improves efficiency, supports animal welfare, and reduces impacts on wild populations.

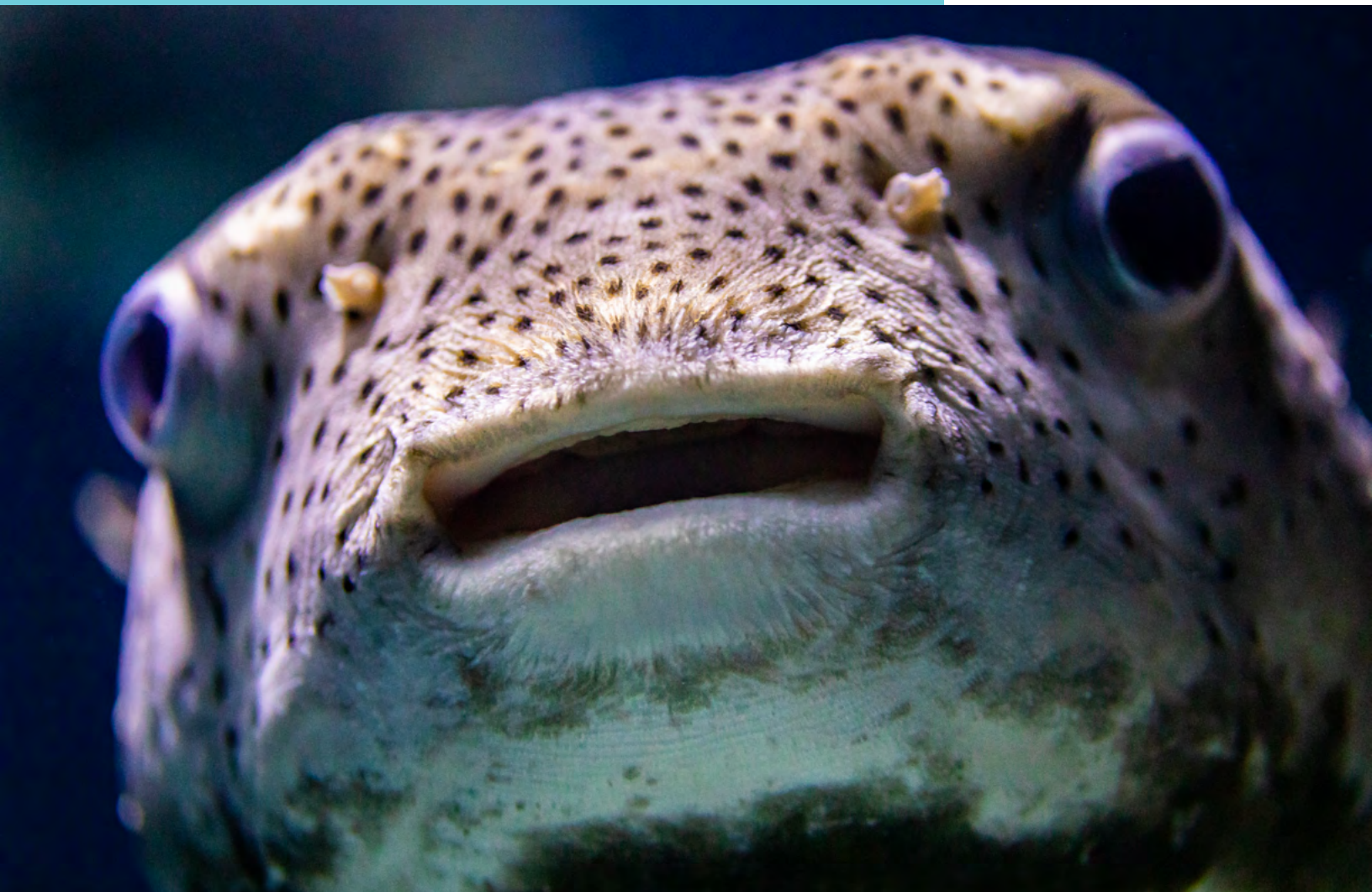


Took part in the annual [Plastic Free Ecochallenge](#), which encourages participants from across North America to practice sustainable actions that reduce their use of single-use plastics during the month of July. The hope is that some of these actions become sustainable long-term habits. The Aquarium's 240 teammates secured fourth place out of 144 teams and kept 2,600 plastic containers, straws and bottles from entering landfills.

Continued preparing the dolphin colony for their future relocation to the [Dolphin Sanctuary](#). Throughout the year, our marine mammal trainers spent over 650 hours working with the pod in sessions designed to build the animals' behaviors related to medical care, physical fitness and mental wellbeing—skills they will need throughout the relocation process and afterward.







# All Thanks to You

**THANK YOU FOR BEING PART OF THE NATIONAL AQUARIUM'S  
GLOBAL COMMUNITY OF HOPEFUL CONSERVATIONISTS,  
UNITED TO RESTORE OUR PLANET.**

## **STAY CONNECTED**

As a nonprofit organization, the National Aquarium relies on donations to support our animal rescue efforts, habitat restoration work, education programs and conservation initiatives.

[Contact our Philanthropy team](#) if you'd like to join our community of hopeful conservationists.  
[Sign up for our newsletters](#) to stay updated on Aquarium news, conservation events and more.

---

*There are thousands of animals representing  
hundreds of species at the National Aquarium.*

# Our Donors

## UNLEASHING POSSIBILITY WITH YOUR GENEROSITY

### LIFETIME GIVING

**The National Aquarium exists today because of the leadership and continuing support of the entire community. The following list recognizes those who have contributed a total of \$200,000 or more to the National Aquarium since it opened in 1981.**

Anonymous (4)	LaVerna Hahn Charitable Trust	PNC Bank
Abell Foundation Inc.	Harford County Government	Jennifer and George Reynolds
Animal Planet/Discovery	William Randolph Hearst Foundation	Betty and Tom Robinson
Anne Arundel County Government	Hoffberger Family Philanthropies	Rosemore Capital Strategies LLC
Association of Zoos & Aquariums	Howard County Government & Howard County Arts Council	Mr. and Mrs. Henry A. Rosenberg Jr.
The William G. Baker Jr. Memorial Fund	Howard Hughes Medical Institute	The Rouse Company
Baltimore City	Hyatt Regency Baltimore	The Ryland Group
The Baltimore Sun Media Group	IMPACTS Research & Development	Richard H. Schwartz
Bank of America	Institute of Museum and Library Services	Mrs. Nina Selin and the Honorable Ivan Selin
Helen and Merrill Bank	Kahlert Foundation	Shared Earth Foundation
The Batza Family Foundation	Kresge Foundation	SimEx Iwerks
The Charles T. Bauer Charitable Foundation	Legg Mason	Sodexo
BD Life Sciences	Lockheed Martin	Southern Maryland RC&D Board
Herbert Bearman Foundation	Lockwood Associates	Stanley Black & Decker
Henry and Ruth Blaustein Rosenberg Foundation	M&M/Mars	State of Maryland
Jacob and Hilda Blaustein Foundation	M&T Bank	Jon Stryker and Slobodan Randielovic
Winnie and Neal Borden/The Harry L. Gladding Foundation	M&T Charitable Foundation	SunTrust Bank
Brown Advisory	Macy's	Helene R. Swearer
Bunting Family Foundation	Ms. Ellen Madden	T. Rowe Price
Ms. Mary Catherine Bunting	Virginia Cretella Mars Foundation	T. Rowe Price Foundation
Ms. Mary Catherine Bunting Foundation	Maryland Department of Housing and Community Development	Tetra/Second Nature
Campbell Foundation	Maryland Environmental Service	The Times Mirror Foundation
Bob and Carol Carter	Maryland Port Administration	Toyota/Pivec Advertising Ltd.
Cermaq	Maryland State Department of Education	Toyota USA Foundation
CFG Bank	McCormick & Company	Transamerica
Chesapeake Bay Trust	Sumner T. McKnight Foundation	Transamerica Foundation
Citizens of Baltimore County	Mr. Harvey M. Meyerhoff	Travelers Foundation
The Classic Catering People	Harvey M. Meyerhoff Fund	U.S. Department of Education
The Coca-Cola Company	Joseph and Harvey Meyerhoff Family Charitable Funds	U.S. Department of the Navy
Constellation	Middendorf Foundation	U.S. Environmental Protection Agency
Scott Corwon	Mr. William H. Miller III	U.S. Small Business Administration
Coty Inc.	Morgan Stanley	Venable LLP
Deutsche Bank Alex. Brown	Curtis & Edith Munson Foundation	Veolia North America
Colleen Dilenschneider	National Fish and Wildlife Foundation	Verizon
Embassy Suites Baltimore Downtown & Grand Historic Venue	National Marine Sanctuary Foundation	Virgin Holidays
Event Network	National Oceanic & Atmospheric Administration	W. R. Grace & Co.
First Union Corporation	National Science Foundation	Harry and Jeanette Weinberg Foundation
France-Merrick Foundation	Northrop Grumman Mission Systems	The Whiting-Turner Contracting Company
Dr. Nancy S. Grasmick	PepsiCo	Ted and Mary Jo Wiese/The Wiese Family Charitable Fund
Randall M. and Holly Griffin	Mr. Scott Plank	
H&S Bakery		



# Our Donors

## UNLEASHING POSSIBILITY WITH YOUR GENEROSITY

### INDIVIDUAL GIVING

**The National Aquarium is pleased to recognize those individuals who made generous philanthropic contributions in 2024.**

#### **\$500,000–\$999,999**

Jennifer and George Reynolds

#### **\$100,000–\$249,999**

The Batza Family Foundation

Mr. and Mrs. John W. Dwyer

The Wiese Family  
Charitable Fund

#### **\$50,000–\$99,999**

John and Susan Racanelli

#### **\$10,000–\$24,999**

Anonymous (2)

Mr. Rueben Bajaj

Dr. and Mrs. Ethan Balkin

The Beveridge Family

Ms. Mary Catherine Bunting

Gina Campbell

Carol and Bob Carter

David Churchill

B.J. Cowie

Andrew and Lisa Cullen

The Dalsheimer Family

Colleen Dilenschneider

Jane and Larry Droppa

Dr. David Granite and Dr.  
Mary Lou Oster-Granite

Dr. Nancy S. Grasmick

Mr. and Mrs. Harold F. Graul Jr.

Christopher and Karen Griffith

Russell Howey

Diane Humphrey

David Kaufman

The Kenny Family

Morrisette Family Foundation

Meredith and Donald  
Mowen/The Mowen  
Family Charitable Trust

Joseph and Melissa Nigro

Dan and Kelly Rizzo

Betty and Tom Robinson

W. Charles Rogers III

Mark and Stacy Sapperstein

Richard H. Schwartz

Thomas and Courtney Spangler

Randy and Nancy Stratton

Jeremy Utara and Jennifer  
Prizeman-Utara

Judith Wagner

Dale Waters

Todd Wilson and Ted Delaplaine

Marc and Jennifer Wyatt

#### **\$5,000–\$9,999**

Anonymous (6)

Victor Abiamiri

Gary Bahena and Jeannie McCoy

Bruce and Polly Behrens

Adam and Meredith Borden

Winnie and Neal Borden

Cathy and Katie Brennan

Danielle Buitrago and  
Wade Guzman

Timothy and Lloyd Burdette

Stephen Charles and  
Janice Hazlehurst

Tom Crusse and David Imre

Samuel and Edith Dell

Ann Fenwick

Mr. Randall M. Griffin

David and Kathleen Lindenstruth

The Link Fund

Dr. David W. Machuga  
and Ms. Manisha Singh

Ronald and Carol Mettam

Point A College Counseling

Dr. Enric Sala and Ms.  
Kristin Rechberger

Charles Suggs and Brittany Fong

Dr. Stacy Suskauer and  
Mr. Gary Suskauer

Sydney Family Charitable Fund

Ms. C. Elizabeth Wagner

Patricia Wheltle

Lorraine and James Wilson

Jeannette and Jason Young

#### **\$2,500–\$4,999**

Anonymous (5)

Amaryllis Foundation

Margot Amelia

Sean Beattie

William and Carol Berg

Mr. and Mrs. Max Bohnstedt

John and Carolyn Boitnott

Jacqueline Bowie and  
Joseph Starnes

David W. Buck Family  
Foundation

Mr. Marc G. Bunting

Matt Caruso

Janet and James Clauson

Jessica Damen and Rufus Lusk

Dos Gatos Artisan Jewelry

Jennifer and Nick Driban

Deborah Farr

JoAnn and Jack Fruchtman

Linda George

The Hecht-Levi Foundation

Dr. David Hunter

Allyson and Mohannad Jishi

Patricia Jonas

Han Jong Koh

Al and Anne Ledbetter

Kathryn Matthews

Souad and Aydanur Mekhennet

Scott Douglas Melton and  
M. Margaret Glover

Nancy Merritt

Mr. and Mrs. Thomas G. Meyer

Mark and Joanne Pollak

Mr. Robert Ramin and Dr.  
Denise M. DeConcini

Bob and Rosemary Reed

Brian and Mary Jo Rogers

Rogers-Wilbur Foundation

Robert, Kay, and Matthew Sauers

Joel and Kathy Sher

Dr. Robert A. Sikorski and  
Mrs. Kathleen M. Sikorski

Ronnie Silverstein

H.R. LaBar Family Foundation  
Fund of the Greater  
Cincinnati Foundation

#### **\$500–\$2,499**

Anonymous (33)

Mansur and Kionne Abdul-Malik

Ryan and Corinne Adams

Bradley and Courtney Akitake

Sara Alexander and  
Lucky Andersson

Christopher and Stephanie Alley

Paul and Donna Amico

Jeff Amoros

Michael and Amanda Andriacco

Attilio and Lisa Arcari

ATI Performance Products Inc.

Leona Bachrach

Martha Badura and  
Patrick Belliotti

Tamara Baer and Mike Flood

Eva Bailey

George and Julie Baker

Bill and Tammy Band

Thomas and Terri Barry

Joy Bartucci and Tyler Cooke

Fred and Melody Bateman

Amanda Bauer

Lynn Beachler

BG David A. Beasley and  
Capt. Katharine Beasley

Heather and Gregory Beck

Michael and Holly Bekesha

Arthur and Carole Bell

James and Eda Bell

Ben & Jerry's - Baltimore  
Peninsula

Luke Benavides and  
Liana Houdershell

Wendy Benchley

Dr. and Mrs. Robert Berger

Gregory Kent Bergey  
and Sevil Yasar

Kathleen and John Berkowitz

Douglas and Tiffany Bernstein

Jacqueline Bershad

Susan Betcke and  
Osmany Espinosa

Ella Biggerstaff and Alisha Smith

Leslie Bishop

Walter and Elaine Bixby

Mordecai and Ellen Blaustein

Dr. and Mrs. Leslie Bluhm

Drs. Ann and Terry Bogard

Cecilia Bonangelino and  
Cecilia Huppmann

Brian and Missee Bonner

Mary Lou and Hannah Bourne

Gary and Elise Bowman

Andrea Boyarsky-Maisel  
and Nicole Maisel

Caitlyn Bradburn

Jonathan and Beth Breeden

Susan and Dan Brennan

James Brenza

Adam and Shannon Brill

Tyson Bross

Mona S. Brown

Amanda and Anthony Budny

Kelly and Mark Buedel

# Our Donors

## UNLEASHING POSSIBILITY WITH YOUR GENEROSITY

Stanley Burd	Michael K. and Lisa A. Dolan	Diane Gilpin and Ashlee Langley	Craig Jerusalem
Barbara Butler and Daniel Fernicola	Jessica and Richard Donahue	Loretta Gladstone	Karen Jones
Celeste and Ryan Cahill	Laura K. Duklewski	Donna and David Glessing	Tyler Jones and Kathryn Hendley
James Colleen Calabrese	James H. Dunston	Michael and Tamela Gonzales	Ashwin and Stephanie Joshi
Drew Cameron	Elliott and Carol Dworin	Melissa Grabill	Michael and Debra Kane
John Campo and Rhonda Stolec-Campo	Timothy and Jane Eckel	Tanya Gresham-Davis and Erica Davis	Holland and Nishant Keerikatte
Stephen and Emily Carlon	Ron and Sharon Edwards	George Grose and Amy Macht	Sean Kelley
Michelle and Lisa Carrigan	In memory of Barbara J. and Louis W. Ehrlich	Ashley Gross and Chloe Mallinson	Mary Kemp and Stephen Hendricks
Samantha Carter and Samuel Pennington	Elvira Elek and Jerry Maples	Gordon and Mary Groven	Linda Kendall and Marietta Mcatee
Arturo Casadevall and Nichole Broderick	Alexandra Elias	Matt and Ann Gruner	Robert R. Kern Jr.
Rosemary Chang	The Eliasberg Family Foundation	Noel Gumabong	Julia Kim and Eric Raabe
Xuying Chang	Daniel Eline and Aubrey Reichard-Eline	Frank and Mary Ellen Gunther	Dr. James G. Kirk and Mrs. Elizabeth J. Kirk
The Chavarria Family	Sean Elliott and Laura Hanyok	Ms. Holland A. Hager	Nicole and Frank Klebieko
Todd Chester	Roya Ellis and Elizabeth Kozlowski	Wallace and Natalie Hales	Megan Kooistra
Matthew and Jennifer Chin	Ms. Nancy S. Elson	Ms. Eydie Hammers and Ms. Jessica Bickel	Trudy R. Koslow
Mei Fung Chin	Thomas and Magdalen Ernst	Catherine R. and James Hammond	Frank and Sherry Kraft
Cho-Packer Giving Fund	Sherleen Espinosa and Enrique Pallesco	Mica and Chris Hansen	Todd and Amy Krems
Ann K. Clapp	Sandra Estrada and Yessenia Carranza	Jennifer and Steven Hanson	Phillip Kronstein
CMS Associates LLC	Sherry and Frazier Evans	James Harper	John and Marilyn Kuray
Justin and Patricia Cole	Marjorie and Charles Everson	Linda D. Harper	Norman and Laura Lacroix
Matthew and Sierra Cook	Arlene Falke	Katherine and Matthew Harris	Neal Langan
Sylvan Cornblatt and Janet Carestia	John and Arlene Faye	James Harvey and Amy Dipasquale	Andrew Lapayowker and Sarah McCafferty
Nicholas Crance	Gail and Howard Feinberg	Dwayne Hatcher	Sharon Larson and Donald Byerly
Kaitlyn Crisamore and James Axe	Deidra and Dennis Fink	Kendra Hay and Clark Miller	Naomi Laue and David Borak
James Cuddy, Dawn Fedorka	David and Merle Fishman	Donald Hebb	Jessica Lawter and Andrew Kaplan
Nicole and Rodger Currie	Andrew and Lea Fitzsimons	Ian Henderson and Karen Henderson	Edward and Jacob Lee
Remi and David Da Rocha-Afodu	James and Carolyn Flesher	Dr. David Hexter and Dr. Federica Farinelli	Ms. Victoria Lee and Mr. Matthew Milecki
Dr. Mohammed and Mrs. Tehmeena Dar	Dean Flowers	Jeremy and Lawrence Higoy	Dr. and Mrs. Yuan C. Lee
David and Jennifer Dardis	John and Charlotte Fong	Glenn Hill and Christine Rawak	William Legg
Kathrine and Juden Dass	Jeri Foster	Carlos Hip	Justin and Michelle Leroy
Kimberly and Scott David	Mrs. Stephanie B. Foy and Mr. Kevin P. Foy	Laura Hirschfeld	Jeffery and Kimberly Lesho
Diane and Seth Davidson	Tiffany Francis	Randolph and Stacy Hoenes	Marilyn Leuthold
Erik Davis and Sherilyn Rigby	Dana and Wendy Frank	Mr. and Mrs. John Hoey	In loving memory of Rebecca C. Liao
Tim and Amy Davis	Ken French	Melina Hopkins	Leslie and Marc Lichtenberg
Sarah and Mark Davison	Jason and Mary Frey	Caitlin Hopper and Chase Mitchell	Mary Lightner and Kellie Blewitt
Barbara and Gerald Davit	Paula and Lou Friedman	Amanda Horton and Camilo Gutierrez	Earl and Darielle Linehan
Jeremy and Kristina Dawes	Zachary and Grace Friedman	Elenora Huber	Jennifer Lipscomb and Sean Rabourn
Patricia de la Cuesta	Aimee and Mark Fulchino	Dennis and Cynthia Hunter	Frank Liu and Ziheng Yuan
Jerry and Claudia Deitrich	Erin and Robert Gajarsa	Galen and Rhondalyn Hursh	Cheryl Long
Melissa and John DeLong	Philip and Ann Gallant	Kari Hyland	Eve Longlade
Stephen and Maryann Dembek	Carlos and Carmen Gallegos	Robert Isabella	Terry and Jean Longstreth
Sherri Dembowski	Arden and Beth Gardner	Michael and Tina Jacobs	Hamlet Lopez and Claudia Reyes-Lopez
Rick Deyoung	Justin Garrard and Kylie Hoffman	Suzanne Jefferies	Denise O. Love
Tracey Diamond	William Garrison	Sean Jeong	
Wanda and Patria Diaz	Thomas and Mary Gentner		
	Mike and Margie Gillespie		



# Our Donors

## UNLEASHING POSSIBILITY WITH YOUR GENEROSITY

Fred and Onike Love	Lewis and Mimi Myers	Vanderwalde	Jennifer Smith and Brandi Labarresmith
Margarita and Kenneth Lovingood	Teja Naraparaju and Natasha Kieval	Santos R. Quintanilla	Mr. Rodney D. Smith and Mrs. Sandrene Smith
John MacMilan Jr.	Susan and Stuart Nathan	Claire Qureshi	Annemarie and Derrick Snyder
Kristopher Malloy and Laura Turowski	Stephen and Joy Neal	Shawn Radford and Jessiac Walles	Jacob and Monica Snyder
James Manzi and Julia Wisniewski	Margaret Neall	Matthew Rains	Aaron Solar and Sarah Dabney
Margaret Margrave and Jacob Luers	Lisa Ness	Deborah Ramsden and Sarah Ramsden	Theresa and Glen Somes
Ted and Marcia Marshall	Antonette Newton	Mr. and Mrs. Henry G. Reinhardt	Paz Soto
Pedro Martinez and Deysi Medrano	Nathan Nguyen and Catherine Pham	Camilla Reminsky and Ashley Sterner	Michelle Spady
Angela Martz	Sonny and Jessica Nguyen	Humza Riaz	Barbara and Leonard Spector
Lynda Paige Marvel and Robert Dyer	Toan and Nhan Nguyen	Ms. Betty J. Rice	Dean and Brigid Stair
Cory and Amy Matsui	Alexander and Misty Nielsen	Michael and Emily Ridge	Trevor and Riley Stapleton
Diane L. Matuszak	Randy Noranbrock and Anna Rappaport	Tom and Angie Riford	Maureen Stefanski
Anne Maxson and Craig Pulford	Roger and Jacqueline Norden	Thomas and Abigail Ring	Deborah and Michael Stern
Nathan and Kristen McCurdy	Lydia and James Nuccio	Jane and William Rivers	James and Fayette Stewart
Ervin and Stephanie McDaniel	The Ochs Family Charitable Fund	Jamie Roddy and Stephen Gray	Stephanie Stewart and Richard Karbowski
Edward F. McDonald	Harry and Janet Oken	Lindsay Rogers	Zachary Stewart
John and Laurie McDowell	Anthony Olsen	Oscar Rohrmoser Munoz and Marianella Nunez Chaverri	James Stofan
Maggie McIntosh	Obed Ortega Barranco and Aner Solis Juarez	Eric and Irene Ruhl	Amy and Paul Stone
Ryan Mckeon	Noah Oshry	Nicholas and Alyson Russo	George and Holly Stone
Owen A. McMahon Jr. and Carolyne Hathaway	Sarah Ouellette	Christine and Jacob Ryder	The Straehle Family
Sean and Cathy McNamara	Tom and Sherry Overby	Samantha Saalfeld and Niklas Troxel	Phillip and Rachel Strayer
Peter McVeigh and Wei Huang	Peter and Ceecee Paizs	Dr. Amy and Mr. Henry Sage	Jon and Kristin Stresing
Evan and Katherine Mead-Brewer	Sarah Pappalardo	Carmen Salcedo-Stehlar and Dennis Stehlar	Brian and Susan Sullam
Mary and Barry Menne	Jayendrakumar and Samya Patel	Leana Saleh	Jamilah Sultan Newton and Jennifer Botros Gobrail
William Mentzer and Jennifer Thompson	Krunal and Sejal Patel	Marcia and Bobby Salmon	Jeanne Swain
Daniel Miller and Mauriella Ditommaso	John and Becky Pauliny	Alan and Nancy Samuels	Pamela Tate
Kevin and Nicole Miller	Takako and David Pefley	Carol and Jerry Sanders	Sam Tawiah
Stephanie and David Millner	Neil Pelkey	The Schiefelbein Household	Myles Taylor and Anna Aurillo
Denise and Mike Monahan	Josianne Pennington	Cindy and Ron Schnaar	Pamela Taylor
Patrick and Deborah Mooney	Matthew Pennybacker and Katina Krasnec	Francis Scudellari	Aubrey Tharpe
Russell and Michele Moores	Philip Perkins and Margaret Allen	Carl Seastrum	Paul Theodore and Neeta Basantkumar
Paul and Rosemary Morgan	Gregg Petersen and Shirley Reddoch	John and Heather Shanton	Johnny and Terri Thomas
Donna Morrison	Renee Pezold	Carol and Ron Sher	Ashley and Alexis Thompson
Alexandra Moses and Justin Hyde	Chan Phuong and Tanya Netayavichitr	Lawrence Shirley	Chuck and Maria Tildon
Barbara Moss	David and Nancy Posner	Jeremy and Rebecca Shoemaker	Steve and Linda Tillinghast
Jaclyn Moyer and Tillman Finley	Tracy and Tim Potter	Robert Sickels	Robert Tkach and Carmen Ching
Emily Mudede and Jonathan Munemo	Christopher and Christine Prescott	Mr. and Mrs. Harris J. Silverstone	Beth and David Tohn
Alexander Mullerklein and Florian Muellerklein	Shakiara Pressley	Rebecca Simmons	Craig and Darlene Townsend
Terrence and Kristina Mulligan	Joshua and Melissa Price	Dr. Timothy L. Skane and Mrs. Christine Skane	Jeffrey and Susan Troll
Alexi Munoz	Pandu Rangarao and Radha Devi Puppala	W. Collier Slade	Megan Tschudy and Paul Otto
Trisha and Kenji Muro	Emily Pusatere	Carole Ann Small and Robert Slempp	Brian and Julie Tyler
	Simon and Jennifer Pyles	Ken Small and Anthia White	Mark and Debra Udey
	Ellen Quinn and Holly	Kristine Smets and Clare Booth	Annie Umbricht-Schneider
		Ian and Destinie Smith	Peter Van Allen
			Jessica and Eddie Vankirk
			Duane and Danielle Verderaime

# Our Donors

## UNLEASHING POSSIBILITY WITH YOUR GENEROSITY

Jennifer and Douglas Vey  
The Vogt Family  
Keyur Vora  
Brandon Voss and Leiana Bryant  
Patricia and Phillip Wabler  
Dr. and Mrs. J. Wade  
Joshua Wald  
Charles Emerson Walker  
Fred and Nancy Walker  
Christine and David Wallace  
Robert and Carolyn Wallace  
Mr. Jeffrey Warren  
Alexandra Weaver  
and Mariluz Davis  
Karen and Charles Weaver  
Mr. and Mrs. James Weekly  
Ron and Linda Weigel  
Drs. Robert and Margaret Weiss  
Catherine and Andrew Wentsel  
Dr. and Mrs. Roland  
W. Wentworth  
Ellie Wesoloski  
Levi West and Malinda Ruokonen  
Andrew and Emily White  
Marie and Michael White  
The Whitehead Family  
Ken and Linda Whitehead  
Wayne and Dianna Wilhelm  
Kimberly and Roger Willardson  
Cathy and Jack Williams  
Jayson Williams  
Robert and Katy Williams  
Charles Wilson  
Steve and Jill Witkin  
Ben and Tina Wolod  
Bailey Wood and Brianna Quinn  
Peter H.S. Wood  
Donna Woodward and  
Jiyoung Ostlund  
Jenni Woodward and  
Timothy Leslie  
Dr. Richard H. Worsham and  
Ms. Deborah Geisenkotter  
Theresa and Ryan Wyatt  
Matthew and Ashleigh Wyble  
Young Again Foundation  
Karen Zeman  
Mark Zielke  
Cobun and David  
Zweifel-Keegan

### INSTITUTIONAL GIVING

**The National Aquarium is  
pleased to recognize those  
individuals who made  
generous philanthropic  
contributions in 2024.**

#### **\$1,000,000+**

Maryland State Department  
of Education  
State of Maryland  
The Whiting-Turner  
Contracting Company  
**\$500,000-\$999,999**  
The Citizens of Baltimore County  
T. Rowe Price Foundation

#### **\$250,000-\$499,999**

Brown Advisory  
Campbell Foundation  
National Oceanic &  
Atmospheric Administration  
U.S. Department of Education

#### **\$100,000-\$249,999**

Baltimore City  
Charles T. Bauer  
Charitable Foundation  
Bunting Family Foundation  
Chesapeake Bay Trust  
Constellation

#### **\$50,000-\$99,999**

CFG Bank  
Event Network  
Hackerman Foundation  
LaVerna Hahn Charitable Trust  
Kahlert Foundation  
Harvey M. Meyerhoff Fund

#### **\$10,000-\$49,999**

Anonymous  
Advance Business Systems  
ARAMARK Corporation  
Bank of America  
BD Life Sciences  
Herbert Bearman Foundation  
Bunting Family Foundation  
Dr. Scholl Foundation  
Max and Victoria  
Dreyfus Foundation  
Enlighten

H&S Bakery  
Howard County Government &  
Howard County Arts Council  
J. F. Fischer  
Knollwood Investment Advisory  
LAZ Inner Harbor Garage  
Lockwood Associates  
M&T Bank  
M&T Bank Charitable Foundation  
Dr. Allan and Charlene  
Macht Philanthropic Fund  
Virginia Cretella Mars  
Foundation  
Mars Foundation  
Maryland Department  
of Natural Resources  
McCormick & Company  
Morgan Stanley  
National Wildlife Federation  
Open Water  
PepsiCo  
PNC Bank  
RadNet  
John Ben Snow Memorial Trust  
SSA Group  
Stifel  
T. Rowe Price  
TEXTRON Systems - AAI  
Transamerica  
Transamerica Foundation  
Truist  
Vicinity Energy  
W. R. Grace & Co.  
**\$5,000-\$9,999**  
American Sugar Refining  
American Trading and  
Production Corporation  
American Urological Association  
Anne Arundel  
Community College  
Archdiocese of Baltimore  
Baltimore Aircoil Company  
Baltimore County Fraternal  
Order of Police Lodge #4  
The Baltimore Life  
Insurance Company  
The Baltimore Sun Media Group  
The Believe in Tomorrow  
Children's House at  
Johns Hopkins  
Carnegie Institution for Science  
- Department of Embryology  
Michele & Agnese  
Cestone Foundation  
Charity Benefits Unlimited LLC  
Chesapeake Conservancy  
Chesapeake Employers'  
Insurance Company  
Children's Fresh Air Society  
Fund of the Baltimore  
Community Foundation  
Continental Realty Corporation  
Corporate Office  
Properties Trust  
DAP Global  
Delaplaine Foundation  
Design Collective  
Dogfish Head Craft Brewery  
General Dynamics - OTS  
Goldsmith Family Foundation  
Harkins Builders  
Humanim  
KCI Technologies  
Kelly Benefits  
Knorr Brake Company  
KPMG LLP  
John J. Leidy Foundation  
Maury Donnelly & Parr  
McCormick & Company HVP  
MECU of Baltimore  
Merritt Properties LLC  
Miles & Stockbridge P.C.  
National Marine Sanctuary  
Foundation  
Phillips Seafood Restaurant  
Plano-Coudon Construction  
Pompeian  
PwC  
RCM&D  
Republic Services of Baltimore  
Richcroft  
Ronald McDonald House  
Charities of Baltimore  
Rosenberg Martin  
Greenberg LLP  
RSM US LLP  
Rummel, Klepper & Kahl LLP  
Saul Ewing LLP  
Shapiro Sher Guinot & Sandler  
Tractor  
United States Gypsum Company  
Venable LLP



# Our Donors

## UNLEASHING POSSIBILITY WITH YOUR GENEROSITY

### \$2,500–\$4,999

Amaryllis Foundation  
Bloomberg  
Center for Coastal Studies  
Dimick Foundation  
Edward St. John Foundation  
The Hecht-Levi Foundation  
Howard Community College  
Live! Casino & Hotel Maryland  
Lord Baltimore Capital Partners LLC  
Laura J. Niles Foundation  
Rogers-Wilbur Foundation  
Schultz & Williams  
Village Learning Place

### \$1,000–\$2,499

Adams Diversified Equity Fund, Inc.  
Adell Plastics  
The Campbell Foundation, Inc.  
The Eliasberg Family Foundation  
Exelon Foundation  
Gallagher Evelius & Jones LLP  
Hollywood Casino at Charles Town Races  
The Joseph Mullan Company  
Dr. Frank C. Marino Foundation  
McGuireWoods LLP  
Point A College Counseling  
Reliance Fire Protection  
The Retreat at Sheppard Pratt  
Rosemore Capital Strategies LLC  
Royal Sonesta Harbor Court Hotel Baltimore  
Schultz & Williams, Inc.  
Shapiro  
Shawe & Rosenthal, LLP  
Utah Division of Arts and Museums  
Whiteford  
The Wonderful Company Foundation, Inc.

### \$500–\$999

Adams Funds  
Adell Plastics  
Asset Strategy Consultants  
Atlantic Marine Conservation Society  
Ayers Saint Gross  
Carahsoft Technology Corp  
Comprehensive Prospect Research

The Coventry School for Dogs & Their People  
The Eliasberg Family Foundation  
Elite Spice  
Ernst & Young LLP  
Exelon Foundation  
French, Shepley & Strong LLC  
Fundamental Administrative Services LLC  
Gallagher Evelius & Jones LLP  
GWWO Architects  
Johnson & Johnson  
The Joseph Mullan Company  
McGuireWoods LLP  
Microsoft  
Nexion Health Management  
The Pew Charitable Trusts  
RACHUBA  
Reliance Fire Protection  
The Retreat at Sheppard Pratt  
Rosemore Capital Strategies LLC  
Royal Sonesta Harbor Court Hotel Baltimore  
Shapiro  
Shawe & Rosenthal LLP  
Whiteford  
Wohlsen Construction Company  
Young Again Foundation

### MATCHING GIFT COMPANIES

**The following organizations generously matched their employees' gifts to the National Aquarium in 2024.**

Anchor Qea LLC  
Apple Computer Inc.  
AT&T  
Bank of America Charitable Foundation  
Cadence Design Systems Inc.  
Casey Matching Gifts Program  
Catalent Pharma Solutions  
Constellation  
Costco Foundation  
Exelon  
General Mills  
Johnson & Johnson  
Marsh & McLennan Inc.  
McCormick & Company Inc.  
Microsoft Matching

Gifts Program  
The Pew Charitable Trusts  
PNC Foundation  
Progressive Insurance Foundation  
T. Rowe Price Foundation  
United Healthcare Group

### LEGACY GIFTS

**Legacy gifts may include bequests, insurance policies, trusts, charitable gift annuities or other planned giving vehicles. We are thankful for these individuals who have included the National Aquarium in their estate plans.**

Mrs. Elizabeth McGlohn  
Ms. Sally Michel  
Miss A. Carter Middendorf  
Robert Reynolds  
The Honorable William Donald Schaefer  
Ms. Marian B. Smith  
Mr. Ernest Stolberg  
Helene R. Swearer  
Mrs. Margaret C. Taylor  
Mr. Ronald Wassel  
Mary Jo and Ted Wiese

### HONORARIA

**Gifts to the National Aquarium were made in honor of the following individuals in 2024.**

Diana Lore  
Sheila Mahoney  
Char Manlove-Laws  
Finn McCubbin  
Thomas Page  
Charles Phillips  
John Racanelli  
Eliot Rudnick-Cohen  
Rosemary Slick  
Lilly Staples  
Paxton Suggs on her 2nd birthday  
Paxton Suggs on her 3rd birthday  
Peter Van Allen  
Judith Wagner  
Ted Wiese

### MEMORIALS

**Gifts to the National Aquarium were made in memory of the following loved ones in 2024.**

Sharon Pavignano  
Charles Phillips Jr.  
Nina Selin  
Elizabeth Shae  
Grant Sheesley  
Joan Shifrin  
Sam Stafford  
Margo Tate  
Joseph Wheeler  
Sadako Alison Yamanaka

### GIFTS IN KIND

**The following supporters made non-cash gifts of goods or services with a stated value of \$250 or more to support the National Aquarium in 2024.**

Bryant Austin  
Compass Veterinary Neurology and Imaging  
Monique Lewis  
National Oceanic & Atmospheric Administration Fisheries - Greater Atlantic Regional Fisheries Office  
Open Water  
Union Craft Brewing  
Winesellers Ltd.  
William Wright

# Our Volunteers

## SHARING YOUR PASSION AND MAKING AN IMPACT

### VOLUNTEER SUPPORT

We are grateful to everyone who gave their time and talent in 2024 to support the National Aquarium and our work. Below are active volunteer contributions by lifetime hours.

#### 10,000+ Hours

Cathleen Berlett  
James Filipczak  
Thomas Major

#### 9,000+ Hours

Terri Goodman

#### 8,000+ Hours

Shirley Gibson

#### 7,000+ Hours

Shirley Guy  
Connie Moore

#### 6,000+ Hours

Michelle Day  
Yvonne Roe  
Becky Simmons

#### 5,000+ Hours

Nicole Castagna  
Elizabeth Cavanaugh  
Dick Hughlett  
James Myers  
Hannah Salvatore  
Geri Schlenoff

#### 4,000+ Hours

Edwin Dick  
Daniel Higgins  
Robin Korotki  
Pam Kreis  
Susan Magri  
Helen Maher  
Kirk Smith  
Pamela Tate  
Susan Treusdell  
Barbara Weaver  
Alan Whitfield  
Andrew Wong

#### 3,000+ Hours

Richard Baumann  
Janice Baxter  
Susan Christenbury  
Kevin Flamm

James Gray  
Abbe Harman  
John Harman  
Cecilia Lambert  
Jennifer Lucas  
Alan McKenzie,  
Amanda Pack  
Andrea Paun  
Gregory Ruff  
Frank Thomas  
Amy Tich

Steven Webster  
Les Weinberg  
Kathleen Wolfe  
Angela Zeit

#### 2,000+ Hours

Norman Belin  
Janet Bischoff  
Jacqueline Bowie  
Melbourne Briscoe  
Thomas Brockett  
Colleen Calabrese  
Kira Canter  
Joseph Chiaramida  
Sal D'Alessio  
Charmaine Dahlenburg  
Charles Erbe  
Mark Everline  
Peter Griffith  
Catherine Hammond  
Charlotte Harris  
Eric Hein  
Carol Hull  
Patricia Jonas  
Elizabeth Kessler  
Lewis Kozlosky  
Jennifer Krisp  
Greg Kuether  
Robert Learmonth  
Howard Linaburg  
Allison Luettel  
Jim Martin  
Mary Menne  
Ed Nawrocki  
Joe Nickoles

Carl Perkins  
Gavin Phillips  
Cheryl Potter  
Colleen Riley  
Tim Seipp  
Sharon Slieker-Jay  
Rob Turner  
John Wade  
Theresa Wunder  
Brian Yakel

#### 1,000+ Hours

Harsh Bajpai  
Luann Barndt  
Andrea Berman  
Ellen Briscoe  
Laura Callahan  
Alexandria Caviness  
Lisa Cole  
Audrey Cronin  
Michael Duffin  
Lara Eade  
Susan Evans  
Mike Fowler  
Jason Gitlin  
Leila Hadj-Chikh  
Jill Hadley  
Derrick Haire  
Elizabeth Harwood  
Carlos Hip  
Gary Huber  
Patricia Huff  
Barry Hughes  
Joshua Kolko  
Maureen Leary  
Alain LECA  
Marcia Lyon  
Nancy Maher  
Amy Marrion  
Frazer Matthews  
Octavia Matzdorf  
Jonathon McDaniels  
Victoria Meadows  
Rachel Patrick-Pacella  
Stephanie Pully  
Brian Rees

Susan Roza  
Robert Schaefer  
Marsha Shutt  
Donald Simard  
Richard Smith  
William Squires  
Edward Stauch  
M. Storck  
Joanne Vogel  
Lynnda Watson  
Debra Wear

#### 500+ Hours

Susan Armiger  
Rachel Bare  
Chloe Battin  
Charles Bednar  
David Blazer  
Mollie Boyd  
Stephen Boykin  
April Brohawn  
Michael Bromery  
Grace Capshaw  
Maria Clagett  
Thomas Crusse  
Douglas Cummings  
Jordan Daughters  
Scott Finley  
Samantha Fogle  
Holland Fowler  
Francesca Galasso  
Annie Gao  
Kain Gleason  
Hannah Grabner  
Harold Hackerman  
Florence Hackerman  
Malia Hale  
Raafat Hanna  
Philomena Hefter  
Tyler Hemerly  
Robyn Jones  
Tina Kahl



# Our Volunteers

SHARING YOUR PASSION AND MAKING AN IMPACT

Emma Kelley  
Ryan Kozel  
Alex Kozlov  
David Kuecks  
Jessica Laer  
Lolo LaSida  
William Linkroum  
Erin Luck  
Emma Macdonald  
Sheila Mahoney

Alex Mann  
Susan Markowitz  
Susan Matthews  
Barry Menne  
Melanie O'Neill  
Nicole Peterson  
Julia Peyton  
Gwyneth Radloff  
Elizabeth Reese  
Anna Reeve

Michael Riggan  
Marc Schabb  
Gabriel Seibel  
Olivia Sellitto  
Johnathan Shiningier  
Jackie Sibila  
Arianna Sindelar  
Kevin Smith  
Kerry Smith  
Kristina Soetje

Katie Somers  
Miles Spangler  
Caroline Spiccioli  
Caroline Underwood  
Jill Waldman  
Jacob Walls  
Arianna Walls  
Peter West

