

# impact 2022

## INSPIRING TOMORROW'S LEADERS AND EMPOWERING COMMUNITIES

The National Aquarium is a nonprofit organization changing the way humanity cares for our ocean planet. Through unparalleled exhibits, science-based education programs and in-the-field initiatives, we inspire conservation of the world's aquatic treasures by connecting people with nature to drive conservation action. We protect and restore the environment; care and advocate for animals; and educate and empower people to care for the world around them. We are proud of what we accomplished in 2022 to benefit people, animals and the planet.



▲ In 2022, the National Aquarium introduced *Voyages*, an after-hours, adults-only event series created by Baltimore for Baltimore.

# nature

## RESTORING VITAL HABITATS FOR WILDLIFE AND PEOPLE

We connect people with nature to drive conservation action around our priorities to combat climate change, save wildlife and habitats, and stop plastic pollution.

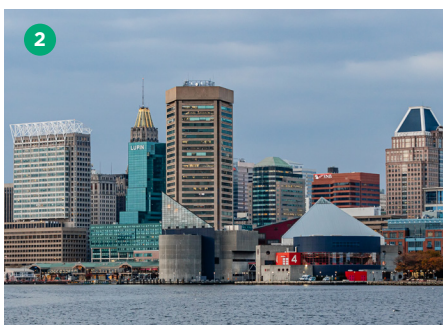
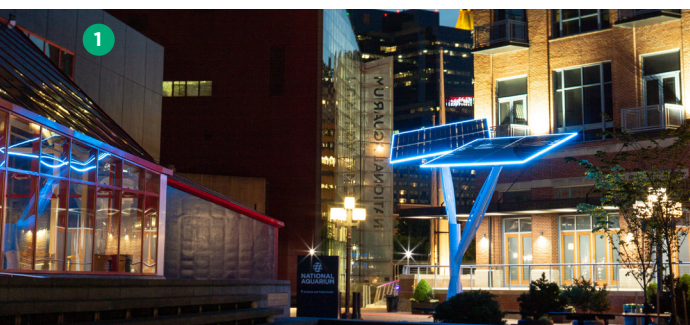
From where the National Aquarium sits at the Inner Harbor's edge in downtown Baltimore, the Patapsco River winds its way to the storied Chesapeake Bay, which connects us to the Atlantic and Earth's one, global ocean. Our location is an important reminder of our responsibility to our community, region and planet.



▲ The Aquarium's partnership with The Nature Conservancy at Nassawango Creek Preserve is combating climate change and restoring an ancient forest ecosystem to its original form.



# nature



- 1 On Earth Day, the Aquarium announced that we will [achieve net-zero emissions by 2035](#)—a major milestone in our commitment to combat climate change. To effectively eliminate our greenhouse gas emissions, we worked with [Verdis Group](#) to calculate our carbon footprint and identify areas of our operations that will need to evolve. As a symbol of our net-zero commitment, the Aquarium and corporate partner [Constellation](#) installed a [solar tree](#) on Pier 4 to harvest solar power and feed electricity into the Aquarium.
- 2 We also worked with local partner organizations to support legislation to achieve net-zero emissions at the local and state level. Thanks in part to those efforts, the Baltimore City Council and Mayor Brandon Scott passed legislation requiring city government operations to achieve net-zero emissions by 2045, and the state passed sweeping legislation that committed Maryland to the most ambitious greenhouse gas reductions of any state in the nation.
- 3 To remove plastic pollution from waterways and wetlands, the Aquarium held cleanup events at Masonville Cove and the Fort McHenry wetland in [South Baltimore](#) and around the Inner Harbor. We also coordinated [Ocean Conservancy International Coastal Cleanup](#) events across the state of Maryland. In total this year, volunteers collected approximately 72,103 pieces of debris at these events, more than 90% of it plastic. Data from these cleanups informs important advocacy work.
- 4 To stop plastic pollution at its source, before it can enter the environment, we focus on education and reduction. Every July, Aquarium employees and volunteers participate in the [Plastic Free Ecochallenge](#), a month-long initiative to spur people to eliminate single-use plastics in their daily lives. This year, we opened the Aquarium team to the public, and 237 people signed on. We also joined organizations and businesses calling for the elimination of plastics from national parks across the country, which is now slated to happen by 2032.
- 5 To create awareness of Baltimore's biodiversity and foster connection to—and responsibility for—healthy ecosystems, we coordinate Baltimore's participation in the [City Nature Challenge](#), an international competition to see which city can find and identify the most species. We also host an annual [BioBlitz at Masonville Cove](#). During these two events, a combined 1,116 community scientists recorded 9,611 observations of 1,134 plant and animal species—including 30 that are rare, threatened or endangered.
- 6 We increase biodiversity, promote healthy habitats and contribute to climate resiliency by planting and maintaining trees, grasses and wetland plants at key sites throughout the Chesapeake Bay watershed. Volunteers and members of the Aquarium's Conservation team planted more than 41,201 native plants in Baltimore County, [Virginia Beach](#) and [Nassawango Creek Preserve](#).

# nurture

## CARING FOR ANIMALS AT THE AQUARIUM AND IN THE WILD

We promote environmental stewardship and animal welfare, and we practice the highest standards of animal care—both inside the Aquarium and out.

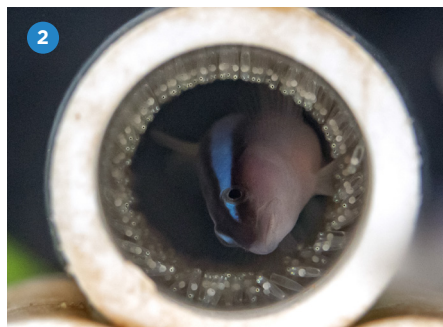
All animals—from microorganisms to apex predators—play critical roles in maintaining healthy ecosystems and a healthy ocean, which humans rely upon for oxygen, water, climate regulation, food, energy and other resources. .



▲ Aquarium staff and volunteers collaborate with local and national institutions to rescue, rehabilitate and release cold-stunned sea turtles.



# nurture



- ① During a major project that kicked off in March and wrapped up in November, all 684 panes of glass in the [Upland Tropical Rain Forest](#) iconic glass pyramid were replaced. The new energy-efficient glass better controls temperatures inside the exhibit, which benefits the animals and plants as well as guests and staff. The glass features permanent etching to deter migratory bird strikes. The state of Maryland invested \$7 million in the \$8 million project, while Baltimore City and Baltimore County joined individual, foundation and corporate philanthropic partners including the Abell Foundation to provide critical additional funding.
- ② The Aquarium is part of an innovative new Association of Zoos and Aquariums (AZA) program to rear larval fish. This program is a way for different organizations to share resources and expertise, which benefits wild populations. The Aquarium started rearing neon gobies in a lab at the [Animal Care and Rescue Center](#) in 2022, and is fine-tuning the rearing system in 2023 so we can provide these fish to other AZA institutions. Having different organizations specialize in the care of specific species of larval fish is more efficient, effective and sustainable.
- ③ National Aquarium Animal Rescue released its 350th animal, a sea turtle, in North Carolina in April. In all, the Aquarium's Animal Rescue and Animal Health teams cared for a total of 79 rescued animals in 2022, with 65 of those patients admitted for long-term rehabilitation. Thirty-one animals were healthy enough to be returned to the ocean last year—30 sea turtles, all critically endangered Kemp's ridleys and endangered greens that were rescued [suffering from the effects of cold stunning](#), and one [juvenile grey seal](#). National Aquarium Animal Rescue also expanded to Maryland's Eastern Shore to ensure quicker response times.
- ④ We played a leadership role in creating and introducing the bipartisan [Sea Turtle Rescue Assistance Act](#). There's a pressing need to generate a sustained source of federal funding to support National Aquarium Animal Rescue and the dozens of other organizations around the country that rescue and rehabilitate endangered sea turtles. Thanks to the leadership of U.S. Senator Chris Van Hollen, funding for sea turtle stranding response and rehabilitation was included in the 2023 federal budget—a first. This funding adds momentum for the act next year.
- ⑤ As part of our work to reintroduce habitat that existed in the Inner Harbor when it was a tidal salt marsh, the Aquarium's 400-square-foot floating wetland prototype installed in 2017 continues to be a haven for wildlife. The team built on previous years' water quality and species biodiversity data, while figuring out how to scale up the wetland to cover up to 10,000 square feet. In a different area of the harbor, we helped to re-create [basking habitat for aquatic turtles](#).
- ⑥ In October we [welcomed a new sea turtle resident](#)—a 42-year-old male Kemp's ridley that had been in a breeding program in the Cayman Islands since the 1980s. He arrived in Baltimore aboard the private jet of National Aquarium Board Member and [CFG Bank](#) founder Jack Dwyer, accompanied by animal care staff to monitor his health and safety. This sea turtle is non-releasable and will eventually move into our [Atlantic Coral Reef](#) habitat, serving as an ambassador animal for our sea turtle conservation efforts.



# next generation

## INSPIRING THE OCEAN CONSERVATIONISTS OF TOMORROW

With a wide range of programs for students from pre-K through college, we are an educational partner that helps young people understand their connection to and responsibility for protecting the natural world. We work with students, families, schools and communities to build skills in science, technology, engineering, the arts and math (STEAM), and we prepare students for college and careers.

The U.S. Bureau of Labor Statistics expects overall employment to grow by 5% between 2018 and 2028, but forecasts that jobs in science, technology, engineering and math fields will expand by nearly 9%. Women continue to be underrepresented in the STEAM workforce, as do Black and Hispanic/Latino communities. We believe diverse backgrounds, thoughts and opinions are critical to scientific progress and the continued development of inclusive conservation and climate change solutions.



*Families can learn together, have fun and connect with each other during a visit to the National Aquarium.*



# next generation



- 1 During 2022—the end of the 2021-22 school year, beginning of 2022-23 and the summer in between—the Aquarium served a total of 41,177 students in grades pre-K through 12 in our education programs. These include in-person and virtual [field trips](#), offered at no cost to in-state students through a partnership with the Maryland State Department of Education; [virtual education programs](#); opportunities for [homeschool families](#); [Terrapins in the Classroom](#); [AquaPartners](#); [What Lives in the Harbor](#); and [Henry Hall Summer Scholars](#).
- 2 Education programs specifically for high schoolers—including Baltimore City's [YouthWorks](#) summer jobs program, the volunteer [Youth Exhibit Guide](#) summer experience, and the [Henry Hall Fellowship](#) work-study program—helped prepare a combined 105 students for college and careers with skills related to science, technology, engineering, the arts and math (STEAM) fields. The 2022 Henry Hall fellows planted trees in downtown Baltimore and calculated that these trees would sequester 42,099 pounds of carbon over the next 40 years.
- 3 While large-scale changes to address climate change, plastic pollution and loss of habitat and biodiversity must happen through public policy, our team engages in meaningful conversations with Aquarium guests to explore these topics and community-level solutions. They use [Animal Encounters](#) and education carts with props to spark guests' interest, explain complex topics, and share resources and ideas for action. Aquarium staff are trained as climate interpreters by the National Network for Ocean and Climate Change Interpretation (NNOCCI).
- 4 Since the National Aquarium and Enoch Pratt Free Library partnered to launch the [Read to Reef](#) book club in 2016, more than 16,258 young Baltimore readers have read more than 82,100 books, earning free visits to the Aquarium for themselves and their families. We also partnered with Pratt to provide bus transportation to the Aquarium and lunch for select Read to Reef participants.
- 5 More than 2,000 guests attended our annual [School Shell-ebration](#) in June. The event, which is supported by Pepsi, provides a free evening visit for Baltimore students and their families at the end of the school year. We also held two Family Days in partnership with Baltimore City Public Schools Office of Early Learning, which provided free Aquarium admission to 196 guests, all Baltimore City families with children under age 5, and partnered with Maryland State Library for their summer reading program, Oceans of Possibilities.

# neighbors

## HONORING OUR COMMITMENT TO OUR COMMUNITY

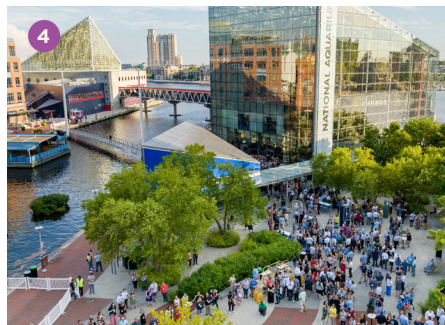
The National Aquarium attracts visitors from around the globe, but we belong to Baltimore. We work to ensure that a visit to the Aquarium is within reach of all our neighbors. We also invest in projects and engage city residents in important conservation work right in their own neighborhoods—from Jonestown to Locust Point to Curtis Bay.



▲ *Voyages, a new, adults-only immersive event series, explores the intersection of art and science.*



# neighbors



- 1 We debuted [Voyages](#), an after-hours, adults-only event series created by Baltimore for Baltimore. For each event, an artist explores a conservation topic and creates original work that guests experience. At [Chapter 1](#), beatboxer and breath artist Shodekeh studied biodiversity and animal communication with input from Ashakur Rahaman. At [Chapter 2](#), Jessica Keyes and Patrick McMinn created a musical composition with feedback from Imani Black. Support for Voyages is provided by the Marjorie Lynn Bank Endowment.
- 2 We released our Diversity, Equity, Inclusion, and Justice Strategic Plan, the first formal document outlining current and future internal DEIJ-focused efforts within the Aquarium. The plan creates a foundation for an intentionally inclusive, equitable workplace environment. The strategic plan—which was developed by B3 JEDI Consulting Group with significant input from teams within the Aquarium—spans 2021 to 2025 and will be evaluated annually and updated every four years. Work on its full implementation is underway.
- 3 In Baltimore's historic Jonestown community where our Animal Care and Rescue Center is located, we contribute to community-led revitalization efforts by serving on the Historic Jonestown Incorporated neighborhood association board. We hosted volunteer events in the Exeter Street Community Garden and partnered with HJI and other local organizations to hold the second annual Jonestown Community Day, which drew 200 attendees.
- 4 The week-long [Association of Zoos and Aquariums' \(AZA\) 2022 Annual Conference](#), hosted jointly by the Aquarium and the Maryland Zoo, drew more than 2,000 aquarium and zoo professionals from around the world to Baltimore in August. The conference kicked off with an icebreaker held at the Aquarium that was our first ever zero-waste event.
- 5 We partnered with [Made in Baltimore](#) to support local makers and artisans by offering locally handcrafted products in the National Aquarium gift shop. Made in Baltimore invests in Baltimore's economy by growing the market for locally made goods and supporting the people who make them.

# by the **numbers**

## OUR ECONOMIC IMPACT: SUPPORTING MARYLAND BY ATTRACTING VISITORS AND CREATING JOBS

Since the day the Aquarium opened in 1981, we have served as an important economic anchor in Baltimore City and throughout Maryland. This remained true in 2022.

*“We are proud and humbled to be Maryland’s most visited attraction and a powerful economic driver for our city and state. Just as importantly, we are committed to our role as a community resource and leader in climate science.”*

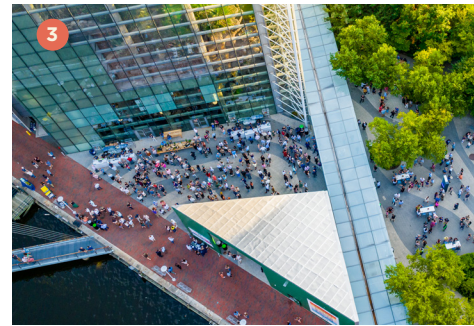
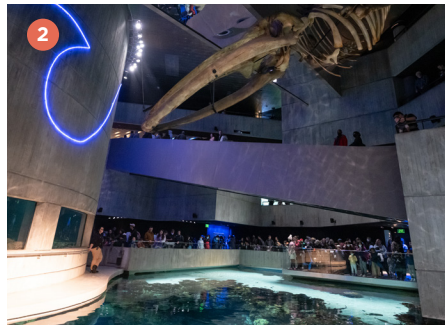
—John Racanelli, President & Chief Executive Officer



▲ Crews installed new LED lights on the exterior of the Aquarium during the Upland Tropical Rain Forest pyramid glass replacement project.



# by the **numbers**



- 1 Across the state of Maryland from 2019 to 2022, the National Aquarium generated \$1.3 billion in economic impact and \$109 million in state and local tax revenue.
- 2 In 2022 alone, the Aquarium drove \$430.6 million in statewide economic impact, generated \$35.8 million in state and local tax revenue, and supported 3,400 jobs.
- 3 We are ranked as one of the top three aquariums in the United States and welcome more than 1 million guests each year.
- 4 Four in five Aquarium visitors are from outside the Baltimore region, and more than 20% stay in the area overnight. Approximately 90% of Aquarium visitors report that the Aquarium is their primary reason for visiting Baltimore.
- 5 According to survey data, about half of all Aquarium guests ordered food and drinks from a nearby restaurant before or after their visit, and close to a quarter visited a nearby store or retailer.

## stay connected

As a nonprofit organization, the National Aquarium relies on donations to support our animal rescue efforts, habitat restoration work, education programs and conservation initiatives. [Contact our Philanthropy team](#) if you'd like to join our community of hopeful conservationists or sign up for our newsletters to stay updated on Aquarium news, conservation events and more!

**[philanthropy@aqua.org](mailto:philanthropy@aqua.org)**

# our donors

## UNLEASHING POSSIBILITY WITH YOUR GENEROSITY

### lifetime giving

**The National Aquarium exists today because of the leadership and continuing support of the entire community. The following list recognizes those who have contributed a total of \$200,000 or more to the National Aquarium since it opened in 1981.**

Anonymous (4)  
The Abell Foundation, Inc.  
Animal Planet/Discovery  
Anne Arundel County Government  
Association of Zoos & Aquariums  
The William G. Baker, Jr. Memorial Fund  
Baltimore City  
The Baltimore Sun Media Group  
Helen and Merrill Bank  
Bank of America  
The Batza Family Foundation  
The Charles T. Bauer Charitable Foundation  
BD Life Sciences  
The Herbert Bearman Foundation  
The Henry and Ruth Blaustein Rosenberg Foundation  
The Jacob and Hilda Blaustein Foundation, Inc.  
Winnie and Neal Borden/The Harry L. Gladding Foundation  
Brown Advisory  
Bunting Family Foundation  
Ms. Mary Catherine Bunting  
Campbell Foundation  
Bob and Carol Carter  
Cermaq  
CFG Bank  
Chesapeake Bay Trust  
The Citizens of Baltimore County  
The Classic Catering People  
The Coca-Cola Company  
Constellation  
Scott Corwon  
Coty, Inc.  
Department of Defense-US Navy

Deutsche Bank Alex. Brown  
Colleen Dilenschneider  
Embassy Suites Baltimore  
Downtown & Grand Historic Venue  
Event Network  
First Union Corporation  
France-Merrick Foundation  
Dr. Nancy S. Grasmick  
Randall M. and Holly Griffin  
H&S Bakery, Inc.  
LaVerna Hahn Charitable Trust  
Harford County Government  
William Randolph Hearst Foundation  
Hoffberger Family Philanthropies  
Howard County Government/  
Howard County Arts Council  
Howard Hughes Medical Institute  
Hyatt Regency Baltimore  
IMPACTS Research & Development  
Institute of Museum and Library Services  
Kahlert Foundation  
The Kresge Foundation  
Legg Mason, Inc.  
Lockheed Martin  
Lockwood Associates  
M&M/Mars  
M&T Bank  
M&T Charitable Foundation  
Macy's  
Ms. Ellen Madden  
Maryland Department of Housing and Community Development  
Maryland Environmental Service  
Maryland Port Administration  
Maryland State Department of Education  
McCormick & Company, Inc.  
The Sumner T. McKnight Foundation  
Mr. Harvey M. Meyerhoff  
The Harvey M. Meyerhoff Fund, Inc.  
Joseph and Harvey Meyerhoff Family Charitable Funds  
Middendorf Foundation  
Mr. William H. Miller III  
Morgan Stanley

The Curtis & Edith Munson Foundation  
National Fish and Wildlife Foundation  
National Oceanic and Atmospheric Administration  
National Science Foundation  
Northrop Grumman Mission Systems  
PepsiCo  
Mr. Scott Plank  
PNC Bank  
Jennifer and George Reynolds  
Betty and Tom Robinson  
Rosemore, Inc.  
Mr. and Mrs. Henry A. Rosenberg, Jr.  
The Rouse Company  
The Ryland Group  
Richard H. Schwartz  
Mrs. Nina Selin and the Honorable Ivan Selin  
Shared Earth Foundation  
SimEx Iwerks  
Sodexo  
Southern Maryland RC&D Board  
Stanley Black & Decker  
State of Maryland  
Jon Stryker and Slobodan Randielovic  
SunTrust Bank  
Helene R. Swearer  
T. Rowe Price  
T. Rowe Price Foundation  
Tetra/Second Nature  
The Times Mirror Foundation  
Toyota/Pivec Advertising, Ltd.  
Toyota USA Foundation  
Transamerica  
Transamerica Foundation  
Travelers Foundation  
United States Environmental Protection Agency  
US Small Business Administration  
Venable LLP  
Veolia North America  
Verizon  
Virgin Holidays  
W. R. Grace & Co.

The Harry and Jeanette Weinberg Foundation  
The Whiting-Turner Contracting Company  
Ted and MaryJo Wiese/The Wiese Family Charitable Fund

### strategic initiatives

**The National Aquarium is pleased to recognize donors who have made investments in strategic initiatives since 2010.**

#### \$1,000,000 or more

Anonymous  
Baltimore City  
Campbell Foundation  
CFG Bank  
The Citizens of Baltimore County  
Constellation  
Scott Corwon  
Jennifer and George Reynolds  
State of Maryland  
Jon Stryker and Slobodan Randielovic  
The Whiting-Turner Contracting Company

#### \$500,000 - \$999,999

Anonymous (1)  
The Charles T. Bauer Charitable Foundation  
Mary Catherine Bunting  
Bunting Family Foundation  
Mr. Scott Plank  
Betty and Tom Robinson  
The Wiese Family Charitable Fund

#### \$250,000 - \$499,999

The Henry and Ruth Blaustein Rosenberg Foundation  
Winnie and Neal Borden/The Harry L. Gladding Foundation  
Brown Advisory  
Mary Catherine Bunting Foundation  
Joseph and Harvey Meyerhoff Family Charitable Funds  
The Harvey M. Meyerhoff Fund, Inc.  
National Oceanic and Atmospheric Administration  
Virgin Holidays



# our donors

## UNLEASHING POSSIBILITY WITH YOUR GENEROSITY

### \$100,000 - \$249,999

Anonymous  
The Abell Foundation, Inc.  
Bob and Carol Carter  
Colleen Dilenschneider  
Kahlert Foundation  
Magic Memories  
Middendorf Foundation  
Mr. William H. Miller III  
John and Susan Racanelli  
Richard H. Schwartz  
Shared Earth Foundation  
Eric and Erin Thompson

### \$50,000 - \$99,999

Anonymous  
Baltimore Ravens  
John and Gayle Bremer  
Lockhart Vaughan Foundation  
Dr. Allan and Charlene Macht  
Philanthropic Fund  
Maryland Heritage Areas Authority  
Pearlstone Family Fund, Inc.  
Plano-Coudon Construction  
Truman Semans  
Michele J. Sparks and Ronald M. Sparks, Jr.  
Bill and Lisa Stromberg

### \$10,000 - \$49,999

Anonymous  
AT&T Foundation  
Ken Bajaj and Rayne Bajaj  
Bank of America  
The Herbert Bearman Foundation  
Bruce and Polly Behrens  
Tom and Barbara Bozzuto  
The Virginia T. Campbell Foundation  
Dorothy Jordan Chadwick Fund  
The Classic Catering People  
Corporate Office Properties Trust  
William H. Cowie  
Brittany Fong and Charles Suggs  
Philip and Ann Gallant  
Dr. David Granite and Dr. Mary Lou Oster-Granite  
Donald Hebb  
The Hecht-Levi Foundation

Sandra Hess/In memory of Janet Ellen Dalsheimer  
Allyson and Mohannad Jishi  
Mr. and Mrs. Francis X. Kelly  
The Lyn and Andrew McCormick Charitable Gift Fund  
People for the Ethical Treatment of Animals  
Don and Joan Pettit  
The Pieninck Family  
PNC Foundation  
Mark and Joanne Pollak  
RCM&D  
Paul and Deborah Silber  
RSM US, LLP  
SimEx Iwerks  
The John Ben Snow Memorial Trust  
Mark Vasilkiv  
Venable LLP  
Ms. C. Elizabeth Wagner  
Todd Wilson and Ted Delaplaine  
Marc and Jennifer Wyatt

### \$5,000 - \$9,999

Anonymous  
Dalsheimer Family  
Andrea Griffin and Lauren Trexler  
Bruce, Caren, Bret, and Corie Hoffberger  
Howard Bank  
Mrs. Anne G. Imboden  
Kelly Benefits  
NFP Advisor Services, LLC  
RBC Blue Water Project  
Southway Builders, Inc.  
Ms. Tamika Langley Tremaglio

### \$2,500 - \$4,999

Anonymous  
Amaryllis Foundation  
BSq Wine Co. LLC  
The Chuck and Ellen Knudsen Charitable Gift Fund  
Chris and Jessica Lupold  
Lee and Whitney Riley

### \$500 - \$2,499

Anonymous  
Ayers Saint Gross  
Dr. Carole C. Baldwin

Ms. Carole Cook  
James and Martha Crowley Charitable Fund  
Mr. and Mrs. Mark Edward  
Ms. Susan Flanigan  
Thomas Gentner  
Gertrude's  
Goldman Sachs & Co.  
Sally Katz  
Townsend and Bob Kent  
Denise O. Love  
Mahogany, Inc.  
Ms. Diana Ramsay  
Shuolun Ruan, MD  
Tara Sime  
Ms. Shirley Sontheimer  
Mr. James Stevenson

### national aquarium society

**The following elite group of donors demonstrated their commitment to ocean conservation by supporting the National Aquarium with gifts of \$2,500 or more in 2022.**

Anonymous (8)  
Amy Abbott  
Margot Amelia  
Gary Bahena and Regina McCoy  
Mr. Rueben Bajaj  
Dr. and Mrs. Ethan Balkin  
David & Eric Beard-Sackett  
Rebecca and Harold D. Beavers  
The Beveridge Family  
Charmain and Barrett Bogue  
Mr. and Mrs. Max Bohnstedt  
John and Carolyn Boitnott  
Winnie and Neal Borden  
Jacqueline Bowie and Joseph Starnes  
Bozzuto Family Charitable Fund  
Cathy and Katie Brennan  
Mr. Marc G. Bunting  
Ms. Mary Catherine Bunting  
Gina Campbell  
Bob and Carol Carter  
Matt Caruso

James D. and Niecy A. Chambers Philanthropic Fund  
Stephen Charles and Janice Hazlehurst  
Todd Cherry and Dr. Sarah Murphy  
Mr. Todd V. Chester  
David Churchill  
Janet and James Clauson  
Code Blue Charitable Foundation  
Dr. and Mrs. Damon Cooney  
Mr. and Mrs. William H. Cowie  
The Dahll-Sanford Family  
Dalsheimer Family  
Nicholas Daly  
Samuel and Edith Dell  
Colleen Dilenschneider  
Jennifer and Nick Driban  
Jane and Larry Droppa  
Mr. and Mrs. John W. Dwyer  
Judi and Steven B. Fader Family Foundation, Inc.  
Ann Y. Fenwick  
Michael Fluharty and Harrison Miller  
JoAnn and Jack Fruchtmann  
Jennifer Geary  
Ms. Linda L. George  
Mrs. Charlotte Ober Goodwin  
Dr. David Granite and Dr. Mary Lou Oster-Granite  
Dr. Nancy S. Grasmick  
Mr. and Mrs. Harold F. Graul, Jr.  
Andrea Griffin and Lauren Trexler  
Christopher and Karen Griffith  
Charles E. (Ted) Herget, Jr.  
Russell Howey  
Ms. Diane S. Humphrey  
Dr. David Hunter  
Allyson and Mohannad Jishi  
Michael Klein  
The Chuck & Ellen Knudsen Charitable Gift Fund  
Han Jong Koh and Catherine Kreutzer  
John and Marilyn Kuray  
Jeff Lawrence and Lily Cheung  
David and Kathleen Lindenstruth  
Chris and Jessica Lupold  
Lusk-Damen Charitable Gift Fund

# our donors

## UNLEASHING POSSIBILITY WITH YOUR GENEROSITY

Dr. David W. Machuga and Ms. Manisha Singh  
 Vicki R. and Michael F. Maloney  
 The Lyn and Andrew McCormick Charitable Gift Fund  
 Scott Douglas Melton and M. Margaret Glover  
 Ronald and Carol Mettam  
 Mr. and Mrs. Thomas G. Meyer  
 Greg and Jodie Molchany  
 Morrisette Family Foundation  
 Meredith and Donald Mowen/The Mowen Family Charitable Trust  
 The Ed and Karen Nevin Family Gift Fund  
 Joseph and Melissa Nigro  
 Kimberly A. and Charles A. Phillips, Jr.  
 Mark and Joanne Pollak  
 John and Susan Racanelli  
 Bob and Rosemary Reed  
 Donald and Lauren Reuwer  
 Jennifer and George Reynolds  
 Dan and Kelly Rizzo  
 Betty and Tom Robinson  
 Brian and Mary Jo Rogers  
 W. Charles Rogers III  
 Mr. and Mrs. Henry A. Rosenberg, Jr.  
 Dr. Enric Sala and Ms. Kristin Rechberger  
 Timothy and Ann Scheve  
 The Schuh Family Foundation  
 Richard H. Schwartz  
 Joel and Kathy Sher  
 Ronnie Silverstein  
 Michele J. Sparks and Ronald M. Sparks, Jr.  
 Nancy and Randy Stratton  
 The Bill and Lisa Stromberg Family Trust  
 Dr. Stacy Suskauer and Mr. Gary Suskauer  
 Sam and Ellyn Sydney  
 Eric and Erin Thompson  
 Jeremy Utara and Jennifer Prizeman-Utara  
 Ms. C. Elizabeth Wagner  
 Ms. Judith Wagner  
 Ms. Beatrice L. Ward

Dale A. Waters Jr.  
 Patricia Wheltle  
 The Wiese Family Charitable Fund  
 Make A Wish Foundation  
 Todd Wilson and Ted Delaplaine  
 The Marc and Jennifer Wyatt Charitable Fund  
 Jeannette and Jason Young

### individual giving

**The National Aquarium is pleased to recognize those individuals who made generous philanthropic contributions in 2022.**

#### \$1,000,000+

Ms. Mary Catherine Bunting/Mary Catherine Bunting Foundation  
 Ms. Emily Dillon  
 Mr. and Mrs. John W. Dwyer  
 Jennifer and George Reynolds

#### \$100,000-249,999

Winnie and Neal Borden  
 Betty and Tom Robinson  
 Eric and Erin Thompson

#### \$25,000-99,999

Mr. Rueben Bajaj  
 Dr. Allan and Charlene Macht Philanthropic Fund  
 Colleen Dilenschneider  
 Charles E. (Ted) Herget, Jr.  
 Russell Howey  
 Kimberly A. and Charles A. Phillips, Jr.  
 John and Susan Racanelli  
 Shari Sant  
 Bill and Lisa Stromberg  
 Ms. Judith Wagner  
 The Wiese Family Charitable Fund

#### \$10,000-24,999

Anonymous (2)  
 Amy Abbott  
 Gary Bahena and Jeannie McCoy  
 Dr. and Mrs. Ethan Balkin  
 The Beveridge Family  
 Tom and Barbara Bozzuto  
 Mr. Marc G. Bunting

Gina Campbell  
 Bob and Carol Carter  
 David Churchill  
 Jane and Larry Droppa  
 Ann Y. Fenwick  
 Jennifer Geary  
 Mr. and Mrs. Harold F. Graul, Jr.  
 Christopher and Karen Griffith  
 Ms. Diane S. Humphrey  
 Allyson and Mohannad Jishi  
 The Lyn and Andrew McCormick Charitable Gift Fund  
 Morrisette Family Foundation  
 Meredith and Donald Mowen/The Mowen Family Charitable Trust  
 Joseph and Melissa Nigro  
 Michele J. Sparks and Ronald M. Sparks, Jr.  
 Jeremy Utara and Jennifer Prizeman-Utara  
 Dale A. Waters Jr.  
 Todd Wilson and Ted Delaplaine  
 The Marc and Jennifer Wyatt Charitable Fund

#### \$5,000-9,999

Anonymous (4)  
 Rebecca and Harold D. Beavers  
 James D. and Niecy A. Chambers Philanthropic Fund  
 Stephen Charles and Janice Hazlehurst  
 Dr. and Mrs. Damon Cooney  
 Dalsheimer Family (In honor of Janet Ellen Dalsheimer)  
 Samuel and Edith Dell  
 Judi and Steven B. Fader Family Foundation  
 Michael Fluharty and Harrison Miller  
 Dr. Nancy S. Grasmick  
 Andrea Griffin and Lauren Trexler  
 The Family of Helen C. Jones  
 Michael Klein  
 John and Marilyn Kuray  
 Jeff Lawrence and Lily Cheung  
 David and Kathleen Lindenstruth  
 Dr. David W. Machuga and Ms. Manisha Singh  
 Ronald and Carol Mettam  
 Bob and Rosemary Reed

Dr. Enric Sala and Ms. Kristin Rechberger  
 Timothy and Ann Scheve  
 Richard H. Schwartz  
 Sam and Ellyn Sydney  
 Ms. C. Elizabeth Wagner  
 Ms. Beatrice L. Ward  
 Jeannette and Jason Young

#### \$1,000-4,999

Anonymous (11)  
 Jonathan Acton II  
 Amarylilis Foundation  
 Margot Amelia  
 George and Julie Baker  
 Gregory Ball and Margaret McCarthy Ball  
 Mr. and Mrs. Thomas Barry  
 Amanda Bauer  
 David and Eric Beard-Sackett  
 Bruce and Polly Behrens  
 Bill Belichick and Linda Holliday  
 Wendy W. Benchley  
 Dr. and Mrs. Robert Berger  
 Jacqueline Bershad  
 Jatinder and Jason Bhuller  
 Charmain and Barrett Bogue  
 Mr. and Mrs. Max Bohnstedt  
 John and Carolyn Boitnott  
 Jacqueline Bowie and Joseph Starnes  
 Elizabeth B. Brasser  
 Cathy and Katie Brennan  
 David W. Buck Family Foundation  
 Timothy and Lloyd Burdette  
 Drew Cameron  
 The Campbell Foundation, Inc.  
 Matt Caruso  
 Dr. Tina Fan and Lee Chen  
 Todd Cherry and Dr. Sarah Murphy  
 Mr. Todd V. Chester  
 Dr. Stanley Chia and Fan-Li Chou  
 Cho-Packer Giving Fund  
 CMS Associates LLC  
 Janet and James Clauson  
 Mr. and Mrs. William H. Cowie  
 Mr. and Mrs. Joseph A. Crumbling



# our donors

## UNLEASHING POSSIBILITY WITH YOUR GENEROSITY

Tom Crusse and David Imre  
The Dahll-Sanford Family  
Nicholas Daly  
Tim and Amy Davis  
Richard and Rosalee Davison  
John and Melissa DeLong  
Maxwell Doherty  
Jennifer and Nick Driban  
Elvira Elek and Jerry Maples  
The Eliasberg Family Foundation  
Jane Evans Ramsay  
Deborah M. Farr  
The Feller Household  
Mr. and Mrs. Karl Flenner  
Andrew and Courtney Fraser  
JoAnn and Jack Fruchtman  
Thomas and Mary Gentner  
Linda George  
Mrs. Charlotte Ober Goodwin  
Randall M. and Holly Griffin  
Michele V. Hagans  
Catherine R. and James Hammond  
Mica and Chris Hansen  
Leslie and Marshall Harrell III  
The Hecht-Levi Foundation  
Ian and Karen Henderson  
David Hexter, MD and Federica Farinelli, PhD  
Mr. and Mrs. James Hudec, Jr.  
Dr. David Hunter  
Sean Jeong  
Patricia Jonas  
Janet Kisler  
The Chuck & Ellen Knudsen Charitable Gift Fund  
Han Jong Koh and Catherine Kreutzer  
Robert and Theresa Koppelman  
Al and Anne Ledbetter  
Lusk-Damen Charitable Gift Fund  
NM Morris Family Foundation  
Chris and Jessica Lupold  
Vicki R. and Michael F. Maloney  
Nancy McKay and Jodi Lis  
Scott Douglas Melton and M. Margaret Glover  
Mr. and Mrs. Thomas G. Meyer

Stacy Miller and Joseph Donahue  
Greg and Jodie Molchany  
Denise and Mike Monahan  
Myers Family Foundation  
The Ed and Karen Nevin Family Gift Fund  
The Obaza Family Charitable Trust  
The Ochs Family Foundation  
Mark and Joanne Pollak  
Jonathan Ralph  
Donald and Lauren Reuwer  
Ms. Betty J. Rice  
Thomas B. Riford and Angela L. Riford  
Dan and Kelly Rizzo  
Brian and Mary Jo Rogers  
W. Charles Rogers III  
Rogers-Wilbur Foundation  
Mr. and Mrs. Henry A. Rosenberg, Jr.  
Cindy and Ron Schnaar  
The Schuh Family Foundation  
Carol and Ronald Sher  
Joel and Kathy Sher  
Dr. Robert A. Sikorski and Mrs. Kathleen M. Sikorski  
Ronnie Silverstein  
Mr. Travis and Mrs. Angela Stiens  
Dr. George and Mrs. Holly Stone  
Nancy and Randy Stratton  
Brian and Susan Sullam  
Connie and Neal Sullivan  
Dr. Stacy Suskauer and Mr. Gary Suskauer  
Mr. and Mrs. David Thaler  
Beth and David Tohn  
Joyce Tong-Oelrich  
Mr. and Mrs. Jeffrey K. Troll  
Annie Umbricht-Schneider  
Constantine and Oleta Vassilopoulos/Adele M. Thomas Charitable Foundation, Inc.  
Dr. Frank C. Marino Foundation  
Brandon and Maya Voss  
Patricia Wheltle  
Make A Wish Foundation  
Mr. and Mrs. Steve Wilson  
Clinton and Christine Winchester  
Dr. Richard Worsham and Ms.

Deborah Geisenkotter  
Kenneth J. Young  
**\$500-999**  
Anonymous (20)  
Ryan and Corinne Adams  
Bradley and Courtney Akitake  
Dr. Wendy Alexander  
Leah Alfonso  
Shubber and Rebecca Ali  
Paul and Donna Amico  
Ishan Anand and Ashleen Sahni  
Virginia Antkowiak  
Jonathan Austin and Rebecca Pfeil  
Jason Baker and Raquel Sierra  
Karen and David Banta  
Nicholas and Lydia Barbeito  
Fred and Melody Bateman  
Lynn Beachler  
Arthur and Carole Bell  
Thomas Bellamy and Serina Floyd  
Heidi and Brian Berghuis  
Charles and Oretha Berko  
The Berkowitz Household  
Ella Biggerstaff and Thomas Kirk  
Ms. Leslie V. Bishop  
Louis Bisso and Danielle Packard Lobato  
Dr. Mordecai and Mrs. Ellen Blaustein  
Andrea Boyarsky-Maisel  
Michael and Grace Boylan  
Jonthan and Beth Breeden  
Daniel and Susan Brennan  
Tim Brennan  
Timothy and Hillary Brennan  
James Brenza  
Tyson and Brittany Bross  
Anthony and Amanda Budny  
Stanley Burd  
Christine Burnett  
Celeste and Ryon Cahill  
John Campo and Rhonda Stolec-Campo  
James Carter  
Xuying Chang  
Jill Cavarria

Gregory and Tatiana Cheloff  
Matthew and Jennifer Chin  
Mei Fung Chin  
John Chrosniak and Stacy Kenney  
Cynthia and James Clair  
Randy Clemens  
Catherine Conner and Derek Frazer  
Sylvan Cornblatt and Janet Carestia  
Richard Corner and Frank Soda  
James Cuddy, Dawn Fedorka  
Nicole and Rodger Currie  
Jo Anna Dale  
David and Jennifer Dardis  
Victoria B. Davis  
Stephen and Maryann Dembek  
Dale DeYoung  
Judith A. Dixon  
Michael K. and Lisa A. Dolan  
Patrick Dolan and Coleen Consolo  
Jessica and Richard Donahue  
Linda Harper  
Sid Dugar  
Laura K. Duklewski  
James H. Dunston  
Timothy S. and Jane Scheivert Eckel  
Sharon and Ronald Edwards  
Alexandra and Michael Elias  
Sean Elliott and Laura Hanyok  
Ms. Nancy S. Elson  
Thomas and Magdalen Ernst  
Lajla Estefan  
Nancy Faulkner and Jon Whitehead  
John and Arlene Faye  
Julian and Adele Feild  
Justine and Jeremy Fields  
Tami and Stuart Fine  
Andrew and Lea Fitzsimons  
Dr. Raymond H. Flores  
Herb and Rhonda Floyd  
Brittany Fong and Charles Suggs  
Jamin and LaTonya Ford  
Brent and Barbara Forrest  
Stephanie and Kevin Foy  
Dana and Wendy Frank  
Zachary Friedman

# our donors

## UNLEASHING POSSIBILITY WITH YOUR GENEROSITY

Paula and Lou Friedman	Norman and Laura LaCroix	Don and Joan Pettit	Brian Stark and Natalie Walker
Philip and Ann Gallant	Meredith Larson	Renee Pezold	Martha P. Stein
Lydia Gemberling	Ms. Victoria Lee and Mr. Matthew Milecki	Sue and Mike Pitchford	Deborah and Michael Stern
Elizabeth Gibbs-Romanowski	Dr. and Mrs. Yuan C. Lee	Sandra Pittman	Fayette and Andy Stewart
Mr. and Mrs. Harrell N. Gillis, Jr.	William Legg	Dr. and Mrs. David B. Posner	Vincent and Phyllis Stewart
Donna and David Glessing	Garrett Levin and Virginia Frasure	Arden Quick and Isabell Muller	Justin Stine and Beatriz Hernandez
Mark and Carol Goodman	Jeff and Rachel Liang	The Quinn Household	Nedra Stokes
Deborah and James Gray	Eve Longlade	Santos R. Quintanilla	The Straehle Family
Terrance Green	Wallace I. Longstreth III and Jean H. Longstreth	Shawn Radford and Jessica Walles	George A. Taler and Cyndy Renoff
Pat and John Grillos	Denise O. Love	Matthew and Katie Rains	Samuel Tawiah
George Grose and Amy Macht	Julie and David Lynn	Mr. and Mrs. Henry G. Reinhardt	Dekey Tenpa
Mary and Gordon Groven	Harley and Beth Magden	Peter Reyes	Alfred Therrien and Penelope Winslow
Matt and Ann Gruner	Conrado Maida and Elzbieta Estrada	Stephen and Casey Rhoads	K. Thienel
James Haggerty and Heather Yannitto	Ted and Marcia Marshall	Byrdie Ricketts	Caitlin Thomas
Susan Hahn	Joanna and Bob Martin	Michael Ridge and Emily Stuck	Chuck and Maria Tildon
Hammers and Bickel Families	Lynda Paige Marvel	Ethan and Julianne Riley	Robert Tkach and Carmen Ching
Larissa Hannon	Amy McCarthy	Braden Robinson and Xiaohui Li	Jesse and Ashley Todd
Wayne and Angela Helge	Edward F. McDonald	Tarin Romich and Ramin Yazdanfar	Reid and Ann Townsend
Ashley and Ryan Hendrickson	Kathy McDonald	Shuolun Ruan, MD	Stephen Travers
Mr. Velario Horick	John and Laurie McDowell	Mr. Henry and Dr. Amy Sage	Mary Van Schoor and Daniel Womack
Alice M. Horowitz	Maureen McGehee	Marcia and Bobby Salmon	Duane and Danielle Verderaime
Samuel S. Hoyle	Ryan McKeon and Katie Spulak	Meg Samonds	Matthew and Karen Vogt
Elenora Huber	John and Suzanne McNamara	Infinite Satterwhite and Otiqua Johnson-Satterwhite	Dr. and Mrs. J. Wade
Dennis and Cynthia Hunter	Nancy Merritt	Adam Sawyer	Charles Walker and Joan Mitchell
Rachel and Jon Hutchison	Lisa Mertz	Thomas Scalea	Fred and Nancy Walker
Kari Hyland	Andrew and Erin Miller	Wendy and Robert Scarborough	Christine Morgan Wallace and David Wayne Wallace
Dr. Lily Im and Dr. Tom Reifsnnyder	Kevin and Nancy Miller	Richard Schaefer and Patricia Schaefer	Brent and Erica Warner
Drs. Troy Jacobs and Kawsar Talaat	Kevin and Nicole Miller	Robert and Elaine Schaefer	Stephanie Weirich
Clayton and Marion James	Mr. and Mrs. William H. Miller III	The Schiefelbein Household	Drs. Robert and Margaret Weiss
Dr. Walter F. Jones and Ms. Cheryl L. Rash Jones	Sharon Musselman-Polek	Jason and Lisa Schwier	Dr. and Mrs. Roland W. Wentworth
Kristina Kahan and Patrick Waples	Jeanne Myers	Carl and Elizabeth Seastrum	Emma, Scot and Ellie Wesoloski
Aaron Kahn and Kelly Kahn	Natarajan Giving Fund	Amanda Seitz	John and Barbara Westgate
Dr. and Mrs. Michael H. Kane	Stephen and Joy Neal	Norman A. Sensinger, Jr.	Ken and Linda Whitehead
Patricia and Qayum Karzai	Tadd Newman	Chetan Sharma and Nidhi Desai	Cathy and Jack Williams
John F. Keiser, Jr.	Kate Newman Zohir and Mohsen Zohir	Elizabeth and Elliot Shue	Steve and Jill Witkin
Townsend and Bob Kent	Randy Noranbrock	Steve Shulder	Matt, Ashleigh, Luke and Cooper Wyble
Mr. Leslie Kidwell	Neil O'Connor and Heather Volk	Robert and Tammy Sickels	Michael and Kimberly Zelena
Tony Kikola	Noah Oshry	Mr. and Mrs. Harris J. Silverstone	Barbara Zelnik
Georgette Kisre	Reid and Thasia Palmieri	Tara and Michael Sime	Cobun and David Zweifel-Keegan
The Klebieko Household	Sarah Q. Pappalardo	Carole Small and Robert Slempe	
Diane Knapp and Sarah Castillo	Barbara and Lynn Parnell	April Smith and Sean Peters	
Frank and Sherry Kraft	John and Becky Pauliny	Jennifer Smith and Brandi Labarre Smith	
Amanda V. Kulikowski	Gregg Petersen and Shirley Reddoch	Philip Soto and Anita Soto	
H.R. LaBar Family Foundation Fund of the Greater Cincinnati Foundation		Thomas and Courtney Spangler	



# our donors

## UNLEASHING POSSIBILITY WITH YOUR GENEROSITY

### institutional giving

**The National Aquarium is pleased to recognize those organizations that made generous contributions in 2022.**

#### \$1,000,000+

CFG Bank  
Constellation  
State of Maryland  
The Whiting-Turner Contracting Company

#### \$100,000 - \$999,999

Anonymous (1)  
Association of Zoos & Aquariums  
The Charles T. Bauer Charitable Foundation  
Brown Advisory  
Bunting Family Foundation  
Mary Catherine Bunting Foundation  
Campbell Foundation  
The Citizens of Baltimore County  
Institute of Museum and Library Services  
Kahlert Foundation  
Maryland State Department of Education  
Middendorf Foundation  
National Oceanic and Atmospheric Administration  
T. Rowe Price Foundation

#### \$30,000 - \$99,999

Baltimore Civic Fund  
Baltimore Ravens  
Bank of America  
Chesapeake Bay Trust  
Event Network  
LaVerna Hahn Charitable Trust  
Howard County Government/Howard County Arts Council  
Lockwood Associates  
M&T Bank  
Maryland Environmental Service  
The Harvey M. Meyerhoff Fund, Inc.  
Joseph & Harvey Meyerhoff Family Charitable Funds  
Morgan Stanley  
PepsiCo

Transamerica  
Transamerica Foundation  
United States Environmental Protection Agency

#### \$10,000 - \$29,999

Anonymous (2)  
Advance Business Systems  
Baltimore Bird Club  
BD Life Sciences  
The Herbert Bearman Foundation  
The Campbell Foundation, Inc.  
Deloitte  
Helen Pumphrey Denit Charitable Trust, Bank of America, N.A., Trustee  
The Max and Victoria Dreyfus Foundation, Inc.  
Embassy of Australia  
H&S Bakery  
The Hecht-Levi Foundation  
KCI Technologies  
LAZ Inner Harbor Garage  
Dr. Allan and Charlene Macht Philanthropic Fund  
Macy's  
Virginia Cretella Mars Foundation  
McCormick & Company, Inc.  
PNC Bank  
RadNet  
SimEx Iwerks  
The John Ben Snow Memorial Trust  
T. Rowe Price  
Trust  
Vicinity Energy  
W. R. Grace & Co.  
  
**\$5,000 - \$9,999**  
American Sugar Refining  
American Trading and Production Corporation  
American Urological Association  
Anne Arundel Community College  
Archdiocese of Baltimore  
Baltimore County Fraternal Order Of Police Lodge #4  
The Baltimore Life Insurance Company  
The Baltimore Sun Media Group  
The Believe in Tomorrow Children's House at Johns Hopkins  
Bloomberg Philanthropies

Carnegie Institution for Science - Department of Embryology  
Michele & Agnese Cestone Foundation  
Chesapeake Employers' Insurance Company  
Children's Fresh Air Society Fund of the Baltimore Community Foundation  
Coastal States Stewardship Foundation  
Continental Realty Corporation  
Corporate Office Properties Trust  
DAP Global, Inc.  
Delaplane Foundation  
Design Collective  
Dogfish Head Craft Brewery  
Dr. Scholl Foundation  
Emergent BioSolutions  
General Dynamics - OTS  
Goldsmith Family Foundation  
Harkins Builders  
J. F. Fischer  
Jack Kent Cooke Foundation  
Kelly Benefits  
Knorr Brake Company  
KPMG LLP  
John J. Leidy Foundation  
Mars Foundation  
Maury Donnelly & Parr  
McCormick & Company - HVP  
MECU of Baltimore  
Merritt Properties, LLC  
Miles & Stockbridge P.C.  
Phillips Seafood Restaurant  
Pompeian  
Powell Recovery Center, Inc.  
Republic Services of Baltimore  
Ronald McDonald House Charities of Baltimore  
RSM US, LLP  
Rummel, Klepper & Kahl  
Saul Ewing LLP  
Schultz & Williams, Inc.  
Shapiro Sher Guinot & Sandler  
Southway Builders, Inc.  
Stifel  
TEXTRON Systems - AAI  
United States Gypsum Company

Utah Division of Arts and Museums  
Venable LLP  
Wolters Kluwer Health

#### \$1,000 - \$4,999

Adell Plastics  
Amaryllis Foundation  
Artula Institute for Arts and Environmental Education Washed Ashore  
BGE  
Bloomberg  
CapEx Advisory Group  
The Dimick Foundation  
Dino Don Inc.  
EA Engineering, Science, and Technology, Inc., PBC  
Edward St. John Foundation  
The Eliasberg Family Foundation  
Exelon Foundation  
Gallagher Evelius & Jones LLP  
Harvey and Daughters Inc.  
Howard Community College  
Lord Baltimore Capital Partners, LLC  
Dr. Frank C. Marino Foundation  
McGuireWoods LLP  
Microsoft  
The Joseph Mullan Company  
National Marine Sanctuary Foundation  
National Wildlife Federation  
Laura J. Niles Foundation  
NM Morris Family Foundation  
North American Association of Environmental Education  
Rachuba Management  
RCM&D  
Reliance Fire Protection  
The Retreat at Sheppard Pratt  
Rogers-Wilbur Foundation  
Rosemore, Inc.  
Royal Sonesta Harbor Court Hotel Baltimore  
Shapiro  
Shawe & Rosenthal, LLP  
Wells Fargo Bank, N.A.  
Whiteford  
Willis Towers Watson  
The Wonderful Company Foundation, Inc.

# our donors

## UNLEASHING POSSIBILITY WITH YOUR GENEROSITY

### \$500 - \$999

Adams Diversified Equity Fund, Inc.  
Asset Strategy Consultants  
Ayers Saint Gross  
Caplan Family Foundation  
The Coventry School Inc. for Dogs & Their People  
Ernst & Young, LLP  
Fundamental Administrative Services, LLC  
GLMV Architecture  
GWWO Architects  
Johnson & Johnson  
National Parks Conservation Association  
Point A College Counseling  
Positive Psyche  
Zubatkin Owner Representation, LLC

### matching gift companies

**The following organizations generously matched their employees' gifts to the National Aquarium in 2022.**

Adams Diversified Equity Fund, Inc.  
Aon  
Apple Computer, Inc.  
AT&T Foundation Matching Gift Program  
Bank of America Charitable Foundation  
Becton, Dickinson and Company  
Cadence Design Systems, Inc.  
Costco Foundation  
Crowe Foundation  
Exelon Foundation  
Google Inc.  
International Monetary Fund  
Jack Kent Cooke Foundation  
Johnson & Johnson  
Liberty Mutual Group, Inc.  
McCormick & Company, Inc.  
Microsoft  
Pfizer Foundation  
PNC Foundation  
T. Rowe Price Foundation  
The Wonderful Company Foundation, Inc.

United Healthcare Group  
Wells Fargo Bank, N.A.

### staff and volunteer giving

**In addition to giving their time and talent, many staff and volunteers made philanthropic contributions to the National Aquarium in 2022. We thank them for their commitment and generosity.**

Stephanie Allard  
Margot A. Amelia  
Susan Armiger  
Luann Barndt  
Jacqueline Bershad  
Jacqueline Bowie  
Colleen Calabrese  
Selina Choy  
Linda Chrisler  
Thomas Crusse  
Charmaine Dahlenburg  
Tessa Dalton  
Michelle Day  
Rick Deyoung  
Penny Dixon-Gumm  
Jessica Donahue  
Jennifer Driban  
Muri Dueppen  
Shaunica Graham  
Catherine Hammond  
Charlotte Harris  
Philomena Hefter  
Daniel Higgins  
Kenneth C. Howell  
Brian Jacobson  
Amanda Johnson  
Mallory A. Ketcherside  
Leslie Kidwell  
Kimberly A. Lacomare  
Melissa Lauterbach  
Robert Learmonth  
Howard Linaburg  
Robert Lindsey  
Eve Longlade  
Allissa R. Lucas

Elizabeth Matthews  
Kristen McCurdy  
Scott Douglas Melton  
Gavin Phillips  
John Racanelli  
Matthew Rains  
Emily A. Reely  
Allison Renaud  
Cecilya Roberts  
Ashleigh Roche  
Susan Roza  
Marc Schabb  
Donald Simard  
Becky Simmons  
Eric Singletary  
Amanda Szucsik  
Pamela Tate  
Sam O. Tawiah  
Eliza Thomas  
Kathy Van Orden  
Emma Vaughn  
Kristin Vitale  
John Wade  
Elizabeth Wagner  
Les Weinberg  
Emma Wesoloski  
Michael Willett  
Erin Wilson  
Samantha J. Zimmerman

### endowed funds

**The National Aquarium wishes to extend special recognition and appreciation to those benefactors who had the foresight and interest to create these endowed funds.**

A. Carter Middendorf Environmental Research Fund  
A. Carter Middendorf Library Fund  
The Endowment for the Marjorie Lynn Bank Lecture Series  
The Gary Gallo Fund for the Preservation of Marine Mammals  
Helene R. Swearer Fellowship in Aquarium Science Fund  
The Henry Hall Endowment Fund  
The Jacob and Hilda Blaustein

Foundation Aquatic Education Endowment Fund  
The Jacob and Hilda Blaustein Foundation Marine Accessions Fund  
James C. McBride Endowment for Managerial and Professional Excellence  
Marion Bowers Memorial

### legacy gifts

**Legacy gifts may include bequests, insurance policies, trusts, charitable gift annuities or other planned giving vehicles. We are thankful for these individuals who have included the National Aquarium in their estate plans.**

Anonymous (6)  
Mr. Tom Alburn and Ms. Patrice Boeke  
Mr. Gary Bahena and Ms. Regina McCoy  
David K. Bealer  
William Bowland  
Dr. Torey Brown  
Henry Carson  
Mrs. C. Selma Carton  
Ms. Kai-Yun Chiu  
Dallas A. Coble  
Caroline A. Coleman  
Ms. Anna E. Fehl  
Vivian L. Franswick  
Ms. Alissa Heneson  
Mr. Charles E. Herget Jr.  
Mr. and Mrs. Leonard Horwits  
Mr. Richard E. Hug  
Ms. Euphemia N. Johnson  
Ms. Helen Jones  
Ms. Judith L. Kressig  
Ms. Carol H. LeTendre  
Ms. Denise O. Love  
Mr. and Mrs. Richard H. Livesay III  
Ms. Ellen Madden  
Mrs. Claire R. Manne  
Mr. Robert S. Maslin III  
Mrs. Elizabeth McGlohn  
Ms. Sally Michel  
Miss A. Carter Middendorf



# our donors

## UNLEASHING POSSIBILITY WITH YOUR GENEROSITY

Robert Reynolds  
The Honorable William Donald Schaefer  
Ms. Marian B. Smith  
Mr. Ernest Stolberg  
Helene R. Swearer  
Mrs. Margaret C. Taylor  
Mr. Ronald Wassel  
Mary Jo and Ted Wiese

### honoraria

#### Gifts to the National Aquarium were made in honor of the following individuals in 2022.

Margot Amelia  
Aziza Bashira  
Eleanor Basile  
Stephanie Bates  
Cyndi and Ray Blanchard  
Gavin Bogan  
Caitlin Boveri  
Brent and Diana's Wedding and Love  
Sue and Bill Coney  
Jack Cover  
Janet Ellen Dalsheimer  
Melinda Desposito  
Emily, Rob & Hazelnut 6.4.2022 Wedding  
Liz Evans  
Anna Michelle Victor Feller  
Kelly Fisher  
Brittany Fong & Charles Suggs  
Prince Edward Franklin

Shirley Grimes  
Ken Howell  
Lisa and Dave Kalen  
Diana Knapp  
Scott Kniffin  
Jason Kohajda  
Kristen, Chuck & Boomer 9.10.2022 Wedding  
Ian Lebold  
Ellen Lesser  
Maddie Levine  
Rebecca Liao (Make-A-Wish Mid-Atlantic)  
Kenneth Lubin  
Madeline, Michael & Pierogi 10.8.2022 Wedding  
Beth Markowitz  
Josh Meriyah  
National Aquarium - In honor of your 41st birthday!  
Hamilton Perkins Sr  
Lou Porta, Dr. Ronald Bank, Dr. and Mrs. Michael Borkon  
Steven Mash Potato  
Leah Pow  
Brian and Tonja Reed and their children Hannah, Lainey and Peyton  
Kevin and Herlene Reed and their children Simrin and Ajay  
Sylvia Rickett  
Sarah Rachel Rosenblatt  
Keith Rubin  
Gregory Ruff  
Robert Mac Sawada  
Melodie Schomig

Staff from Ocean Lover's Dinner  
Diane Stevenson  
Leah Sulkowski  
Ezra, Elliot, Eloise Turks  
Judy Wagner  
Brian Yakel

### memorials

#### Gifts to the National Aquarium were made in memory of the following loved ones in 2022.

William Beveridge  
John Bongiorno  
Paul Bonicker  
Carolyn Burchfiel  
Patty Byrnes  
Calypso the Turtle  
Terri Dunahay  
Walt Durham  
Barbara & Louis Ehrlich  
Tom Fischer  
Sylvestre Godines  
John Greer  
Suzanne Hassell  
Effie Hatchett  
Jessica Headlee  
Dale Helfgott  
Michael Horstkamp  
Helen C. Jones  
John Kisler  
Andrea Kramer  
Li L  
Linda Michalski

Robert Morales  
Miriam Nathanson  
Sara "Sasa" Britton Noftsinger  
Duane Pingel  
Karen Hageman Puleo  
Donna Robak/The Family of Linda Michalski  
Leigh Rogers  
Al Ryan  
Nina Selin  
Shadow The Fish  
Albert Shulley  
Doug Spicher  
Lillian Taber  
Edmund Frederic Truter  
Claire Turberville  
Betty White  
Marie Willis  
Sandra Woodis  
Goldie Zak

### gifts in kind

#### The following supporters made non-cash gifts of goods or services with a stated value of \$250 or more to support the National Aquarium in 2022.

Anonymous  
American Real Estate Partners  
Google Grant Ads  
Harbor East Marina  
IMPACTS Experience  
SSA Group  
Union Craft Brewing  
Winesellers, Ltd.

# our volunteers

## SHARING YOUR PASSION AND MAKING AN IMPACT

### volunteer support

**We are grateful to everyone who gave their time and talent in 2022 to support the National Aquarium and our work. Below are active volunteer contributions by lifetime hours.**

#### 10,000+ Hours

James A. Filipczak  
Thomas D. Major  
Patricia A. Venturino

#### 9,000+ Hours

Cathleen R. Berlett  
Terri F. Goodman

#### 8,000+ Hours

Shirley M. Gibson  
Shirley C. Grimes

#### 7,000+ Hours

Shirley Guy  
Connie A. Moore

#### 6,000+ Hours

Yvonne M. Roe

#### 5,000+ Hours

Michelle Day  
Hannah Moyer Salvatore  
Geri J. Schlenoff  
Becky T. Simmons

#### 4,500+ Hours

Nicole M. Castagna  
Elizabeth K. Cavanaugh  
Daniel Higgins  
Dick E. Hughlett  
Helen G. Maher  
James C. Myers

#### 4,000+ Hours

Tom Deakin  
Kenneth Devivo  
Edwin J. Dick  
Geraldyn M. Fromm  
Robin G. Korotki  
Susan M. Magri  
Kenneth R. Rhoades

Pamela W. Tate

Susan B. Treusdell

Barbara J. Weaver

Alan J. Whitfield

Andrew G. Wong

#### 3,500+ Hours

Janice C. Baxter  
Susan A. Christenbury  
John Harman  
William M. Hicks  
Pamela B. Kreis  
C. Alan Little  
Jennifer B. Lucas  
Michael O'Connell  
Andrea Paun  
Kirk J. Smith

#### 3,000+ Hours

Richard G. Baumann  
Ralph G. Cass  
Kevin J. Flamm  
James R. Gray  
Abbe Harman  
Cecilia A. Lambert  
Kristen N. Mankowski  
Alan J. McKenzie, Jr.  
Amanda M. Pack  
Cristina W. Quigley  
Gregory W. Ruff  
Frank B. Thomas  
Amy L. Tich  
Les G. Weinberg  
Kathleen A. Wolfe  
Phil Wujek

#### 2,500+ Hours

Richard Clagett  
Mark E. Everline  
Peter C. Griffith  
Charlotte F. Harris  
Lewis Kozlosky  
Carl S. Perkins  
Elizabeth Wagner  
Steven D. Webster  
Angela M. Zeit

#### 2,000+ Hours

Norman M. Belin  
Melbourne G. Briscoe  
Sal D'Alessio  
Doug B. Haggerty  
Catherine R. Hammond  
Eric R. Hein  
Elizabeth A. Kessler  
Jennifer Krisp  
Robert T. Learmonth  
Kim L. Little  
Jim P. Martin  
Mary C. Menne  
Morris Mou  
Joe F. Nickoles  
Gavin Phillips  
Colleen R. Riley  
Tim Seipp  
Sharon A. Slieker-Jay  
Nina Sonin  
Rob Turner  
Thomas Warren Brockett  
Theresa Wunder  
Brian J. Yakel

#### 1,500+ Hours

Janet Bischoff  
Jacqueline J. Bowie  
Paul M. Briant  
Colleen Calabrese  
Kira Canter  
Joseph Chiamida  
Charmaine M. Dahlenburg  
David P. Glover  
Angela M. Gruenfelder  
Jill A. Hadley  
Elizabeth Harwood  
Dianne J. Hirsch  
Jacob Honn  
Carol R. Hull  
Patricia Jonas  
Joshua H. Kolko  
Greg P. Kuether  
Michael A. Lalime  
Elysa E. Leonard  
Howard L. Linaburg

Allison Luettel  
Ed P. Nawrocki  
Cheryl A. Potter  
Wayne R. Rohauer  
Susan E. Roza  
Christine Santos  
Marsha J. Shutty  
Edward G. Stauch  
Joanne Vogel  
John Victor Wade

#### 1,000+ Hours

Jessica Armacost  
Harsh Bajpai  
Luann Barndt  
Andrea Berman  
Sara N. Blickenstaff  
Laura Callahan  
Lisa K. Cole  
Terri G. Dunahay  
Susan Evans  
Jason D. Gitlin  
Ruthie Griffith  
Leila Z. Hadj-Chikh  
Derrick M. Haire  
Carlos Hip  
Gary A. Huber  
Barry Hughes  
Taylor Jones  
Maureen F. Leary  
Alain J. Leca  
Marcia E. Lyon  
Amy C. Marrior  
Frazer Matthews  
Octavia A. Matzdorf  
Autumn L. McElroy  
Rachel L. Patrick-Pacella  
Anthony Raneri  
Brian P. Rees  
Robert Schaefer  
Richard Smith  
William F. Squires  
M. Jeanne Storck  
David L. Trubey  
Damian A. Wilk  
Judson R. Wilks



# our **volunteers**

## SHARING YOUR PASSION AND MAKING AN IMPACT

Patty Williams  
George E. Wilson  
Shifu Zhao

### **500+ Hours**

Susan Armiger  
Elizabeth C. Atwood  
Chloe Battin  
Mollie Boyd  
Ellen D. Briscoe  
Grace A. Capshaw  
Nahush Chandaver  
Audrey Elizabeth Cronin  
Thomas F. Crusse

Michael J. Duffin  
Lara Eade  
Chris Erdman  
Scott Finley  
Francesca Galasso  
Florence Roslyn Hackerman  
Joshua Harrison  
Melissa A. Hedding  
Philomena Hefter  
Tyler S. Hemerly  
Patricia Ann Huff  
Andrew S. Judson  
David Eugene Kuecks  
Lolo LaSida

Yin Liang  
Nancy Lee Maher  
Savannah Mangold  
Alex D. Mann  
Sheila Mahoney  
Susan P. Markowitz  
Jonathon R. McDaniels  
Melanie O'Neill  
Nicole Peterson  
Stephen Plitt Boykin  
Gwyneth J. Radloff  
Elizabeth Reese  
Yasmin Resto  
Nora L. Salzberg

Joann Sharp  
Taylor Shaye Anderson  
Donald Norman Simard  
Kevin C. Smith  
Caroline Spiccioli  
Maria Surman  
Laura Melisa Veru  
Jill Waldman  
Arianna Walls  
Lynnda T. Watson  
Debra Wear  
Peter T. West  
Wendi Winkelman